
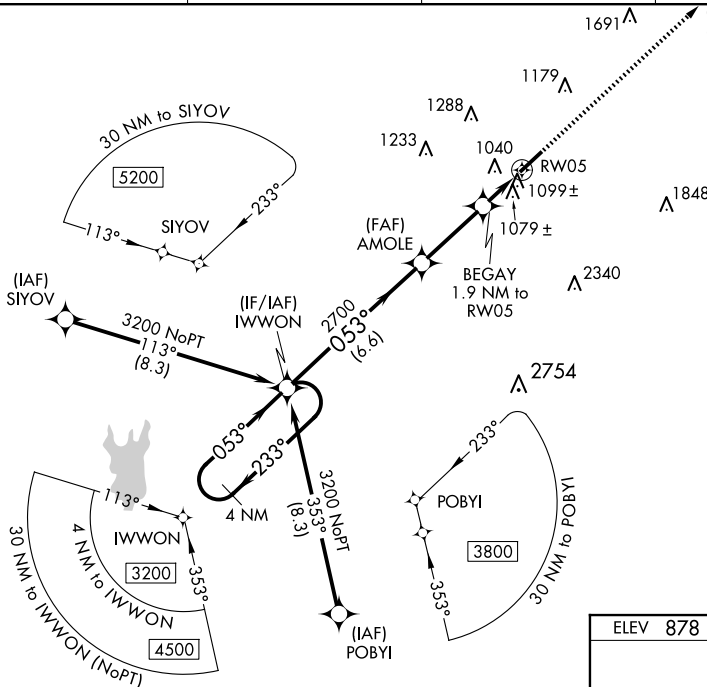


RNAV (GPS) RWY 5
LINCOLN-TOLSON COUNTY RGNL (IPJ)

T When local altimeter setting not received, use Charlotte altimeter setting: increase LPV DA to 1395 feet, LNAV/VNAV DA to 1463 feet and visibility LNAV/VNAV $\frac{1}{4}$ SM; increase all MDAs 80 feet and visibility Cats C and D $\frac{1}{4}$ SM. Rwy 5 helicopter visibility reduction below $\frac{3}{4}$ SM NA. Baro-VNAV and VDP NA when using Charlotte altimeter setting.

A For uncompensated Baro-VNAV systems, LNAV/VNAV NA below -16°C or above 47°C.

UNICOM
123.05 (CTAF) 



MISSED APCH FIX

4 NM

053°

233°

JIVOM

4 NM Holding Pattern

VGS and RNAV glidepath not coincident (VGS Angle 3.40/TCH 64).

3200 ← 233° 053° →

GP 3.40° TCH 58

IWWON

AMOLE 2700

BEGAY 1.9 NM to RW05

*1.2 NM to RW05

*1620

3000 JIVOM

*LNAV only.

4.6 NM 3 NM 0.7 NM 1.2 NM

CATEGORY	A	B	C	D
LPV DA	1332-1 $\frac{3}{8}$	454 (500-1 $\frac{3}{8}$)		NA
LNAV/ VNAV DA	1400-1 $\frac{1}{2}$	522 (600-1 $\frac{1}{2}$)		NA
LNAV MDA	1360-1	482 (500-1)	1360-1 $\frac{3}{8}$	482 (500-1 $\frac{3}{8}$)
C CIRCLING	1400-1 522 (600-1)	1440-1 562 (600-1)	1640-2 $\frac{1}{4}$ 762 (800-2 $\frac{1}{4}$)	1640-2 $\frac{1}{2}$ 762 (800-2 $\frac{1}{2}$)

