

LOC/DME I-IPJ

111.15

Chan 48 (Y)

APP CRS

233°

Rwy Idg

5501

TDZE

872

Apt Elev

878

ILS Y or LOC Y RWY 23

INCOLNTON-LINCOLN COUNTY RGNL (IPJ)

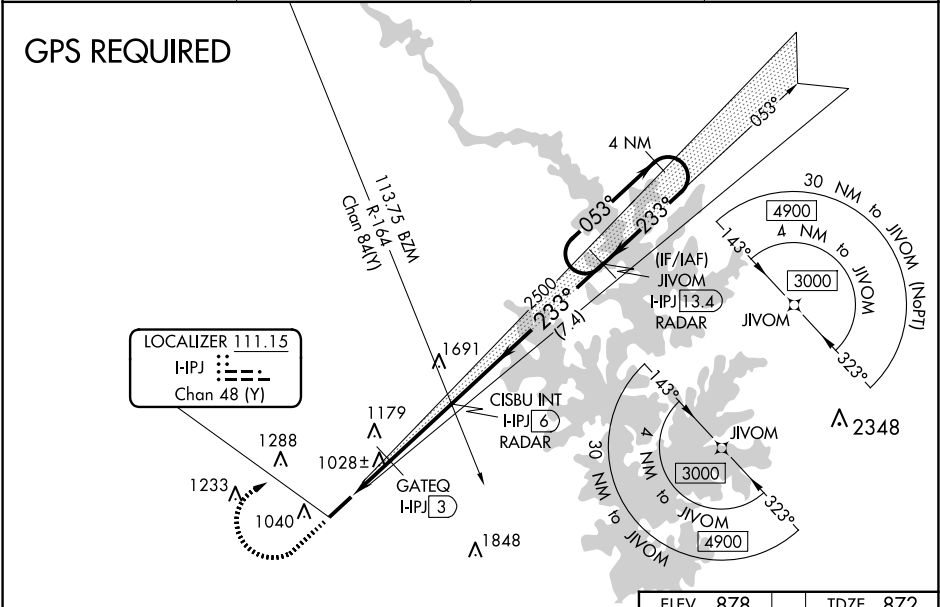
⚠

When local altimeter setting not received, use Charlotte altimeter setting: increase DA to 1212 feet and visibility ½ SM; increase all MDAs 80 feet and visibility S-LOC 23 Cats C/D ½ SM and Circling Cats C/D visibility ¼ SM and GATEQ Fix Minimums Cats C/D ¼ SM. VDP NA when using Charlotte altimeter setting. Rwy 23 helicopter visibility reduction below ¾ NA.

MISSED APPROACH:

Climb to 1600 then climbing right turn to 3100 direct JIVOM I-IPJ 13.4 DME/RADAR and hold (GPS Required).

AWOS-3 119.675	CHARLOTTE APP CON 134.75 257.2	CLNC DEL (GCO) 124.9	UNICOM 123.05 (CTAF) ①
-------------------	-----------------------------------	-------------------------	---------------------------



1600

3100

↑

↗

JIVOM

I-IPJ

13.4

*1540 when using Charlotte altimeter setting.

*LOC only.

HPJ

1

*I-IPJ

2.2

GATEQ

I-IPJ

3

CISBU INT

I-IPJ

6

HPJ

13.4

RADAR

Δ 2754

2500

233°

053°

3000

GS 3.00°

TCH 47

1.2 NM

0.8

3 NM

7.4 NM

4 NM Holding Pattern

233° 5 NM from FAF

0.3% UP

5700 X 100

REIL Rwys 5 and 23

MIRL Rwy 5-23

CATEGORY	A	B	C	D
S-ILS 23	1149-7⁄8 277 (300-7⁄8)			
S-LOC 23	1460-1	588 (600-1)	1460-1¾ 588 (600-1¾)	
CIRCLING	1460-1	582 (600-1)	1640-2¼ 762 (800-2¼)	1640-2½ 762 (800-2½)
GATEQ FIX MINIMUMS				
S-LOC 23	1280-1	408 (500-1)	1280-1⅛ 408 (500-1⅛)	
CIRCLING	1400-1 522 (600-1)	1440-1 562 (600-1)	1640-2¼ 762 (800-2¼)	1640-2½ 762 (800-2½)
FAF to MAP 5 NM				
Knots	60	90	120	150 180
Min:Sec	5:00	3:20	2:30	2:00 1:40