

| | | |
|--|------------------------|---|
| WAAS CH 58107 W13A | APP CRS 129° | Rwy Idg TDZE 1005 Apt Elev 1008 |
|--|------------------------|---|

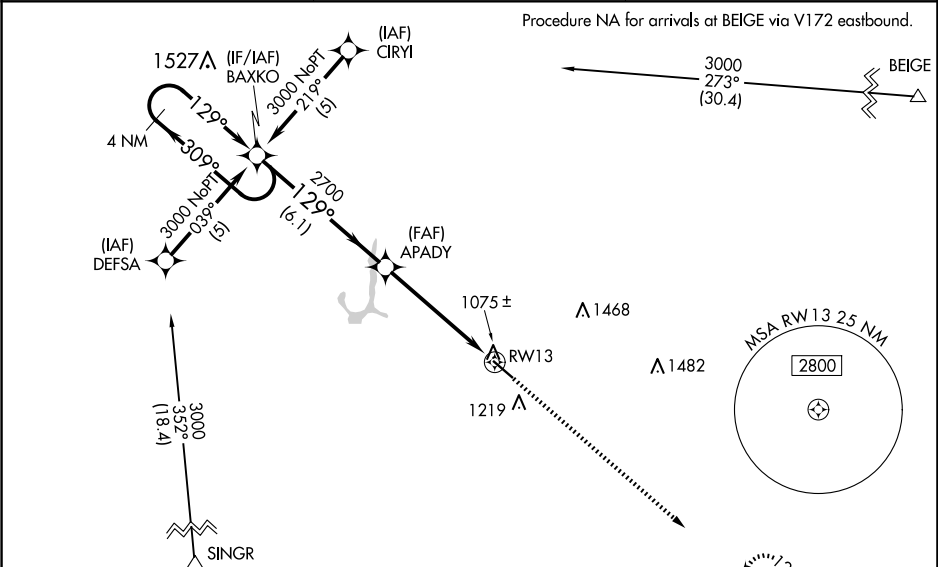
RNAV (GPS) RWY 13

GRINNELL RGNL (GGI)

When local altimeter setting not received, use Newton altimeter setting and increase all DAs 38 feet and all MDAs 40 feet, increase LPV and LNAV/VNAV visibility ¼ mile all Cats and LNAV Cat C visibility ¼ mile. Baro-VNAV NA when using Newton altimeter setting.
For uncompensated Baro-VNAV systems, LNAV/VNAV NA below -17°C (2°F) or above 54°C (130°F).
Visibility reduction by helicopters NA. DME/DME RNP-0.3 NA.

MISSED APPROACH: Climb to 3000 direct PICRA and hold.

| | | |
|--------------------------|--|---------------------------------|
| AWOS-3 120.725 | CHICAGO CENTER 127.05 282.35 | UNICOM 122.8 (CTAF) 0 |
|--------------------------|--|---------------------------------|



| | |
|-----------|-----------|
| ELEV 1008 | TDZE 1005 |
|-----------|-----------|

| | | | | |
|----------------------|----------------------|-------------|----------------------|-------|
| 4 NM Holding Pattern | | BAXKO | 3000 | PICRA |
| 3000 | | APADY | 2700 | RW13 |
| GP 3.00° TCH 34 | | 6.1 NM | 5.2 NM | |
| CATEGORY | A | B | C | D |
| LPV DA | 1284-1 279 (300-1) | | | NA |
| LNAV/VNAV DA | 1415-1½ 410 (500-1½) | | | NA |
| LNAV MDA | 1480-1 | 475 (500-1) | 1480-1¼ 475 (500-1¼) | NA |
| CIRCLING | 1620-1 | 612 (700-1) | 1620-1¾ 612 (700-1¾) | NA |