

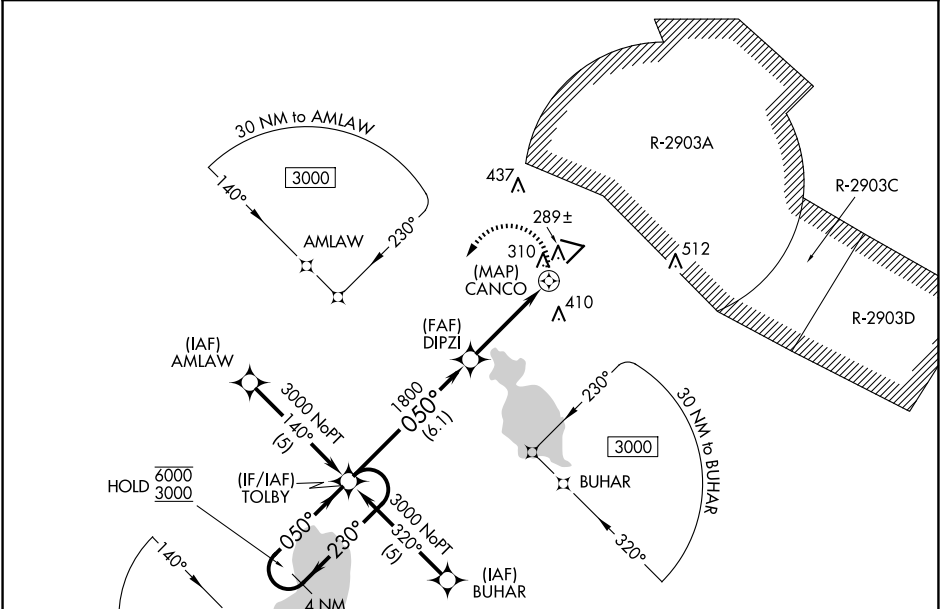
APP CRS	Rwy Idg	5046
050°	TDZE	190
	Apt Elev	196


RNAV (GPS) RWY 5

KEYSTONE HEIGHTS (42J)

RNP APCH.		
<div><div><div><div><div></div><div></div></div><div><div></div><div></div></div></div><div><div></div><div></div></div></div></div>	<div><div><div>Circling to Rwy 11, 23, 29 NA at night. Circling NA for Cats B and C northeast of Rwy 11-29. Rwy 5 helicopter visibility reduction below $\frac{3}{4}$ SM NA. When local altimeter setting not received, use Gainesville altimeter setting and increase all MDAs 60 feet.</div></div></div>	<div>MISSED APPROACH: Climbing left turn to 3000 direct TOLBY and hold.</div>

AWOS-3 124.275	JACKSONVILLE APP CON 118.175 338.25	UNICOM 122.7 (CTAF) 0
-------------------	--	--------------------------



1047 

30 NM to TOLBY (NoPT)

3000

4 NM Holding Pattern

TOLBY

6000 ← 230°

3000 050° →

050°

DIPZI

1800

3.04°

TCH 40

CANCO

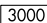
6.1 NM

3.9 NM

1 NM

CATEGORY	A	B	C	D
LNNAV MDA	600-1¼ 410 (500-1¼)			NA
CIRCLING	620-1¼ 424 (500-1¼)	660-1¼ 464 (500-1¼)	720-1½ 524 (600-1½)	NA

3000 TOLBY



ELEV 196

TDZE 190

4899 X 75

5046 X 100

D 4° UP

050°

REIL Rwy 5, 11 and 23

MIRL Rwy 5-23 and Rwy 11-29

