

APP CRS	Rwy Idg	3900
226°	TDZE	989
	Apt Elev	989

RNAV (GPS) RWY 23

BURNETT COUNTY (RZN)

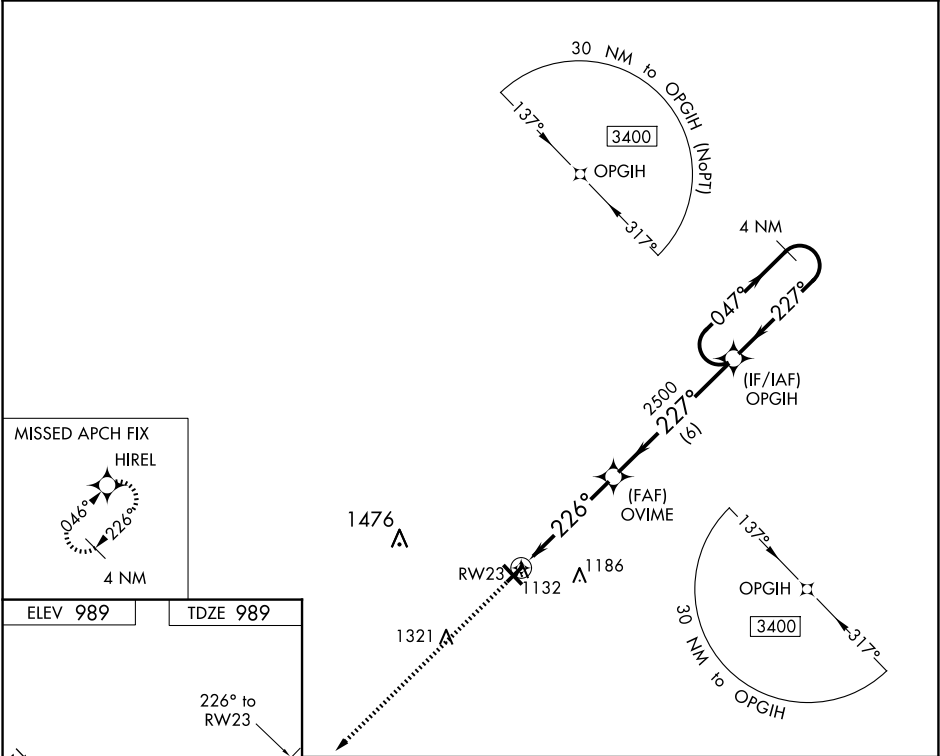
▼

▲

DME/DME RNP-0.3 NA. When local altimeter setting not received, use Rush City, MN altimeter setting and increase all MDA 80 feet; increase LNAV Cat C/D visibility 1/8 mile, and Circling Cat C/D visibility 1/4 mile. Helicopter visibility reduction below 1 SM NA. Night landing: Rwy 5, 23, 32, NA.

MISSED APPROACH: Climb to 3400 direct HIREL and hold.

AWOS-3 118.325	MINNEAPOLIS CENTER 121.05 235.775	UNICOM 122.8 (CTAF) 0
-------------------	--------------------------------------	--------------------------



ELEV 989

TDZE 989

226° to RW23

5000 X 75

3900 X 75

5

32

3400

HIREL

VGSI and descent angles not coincident (VGSI Angle 3.00/TCH 27).

OPGIH

4 NM Holding Pattern

OVIME

227°

2500

226°

227°

047°

3400

4.6 NM

6 NM

CATEGORY	A	B	C	D
LNAV MDA	1 440-1	451 (500-1)	1 440-1 <sup>3</sup> / <sub>8</sub>	451 (500-1 <sup>3</sup> / <sub>8</sub> )
CIRCLING	1 440-1	451 (500-1)	1 540-1 <sup>1</sup> / <sub>2</sub> 551 (600-1 <sup>1</sup> / <sub>2</sub> )	1 680-2 <sup>1</sup> / <sub>4</sub> 691 (700-2 <sup>1</sup> / <sub>4</sub> )