

APP CRS	Rwy Idg	5752
058°	TDZE	10
	Apt Elev	12

RNAV (GPS) RWY 5

KOSRAE (TTK)(PTSA)

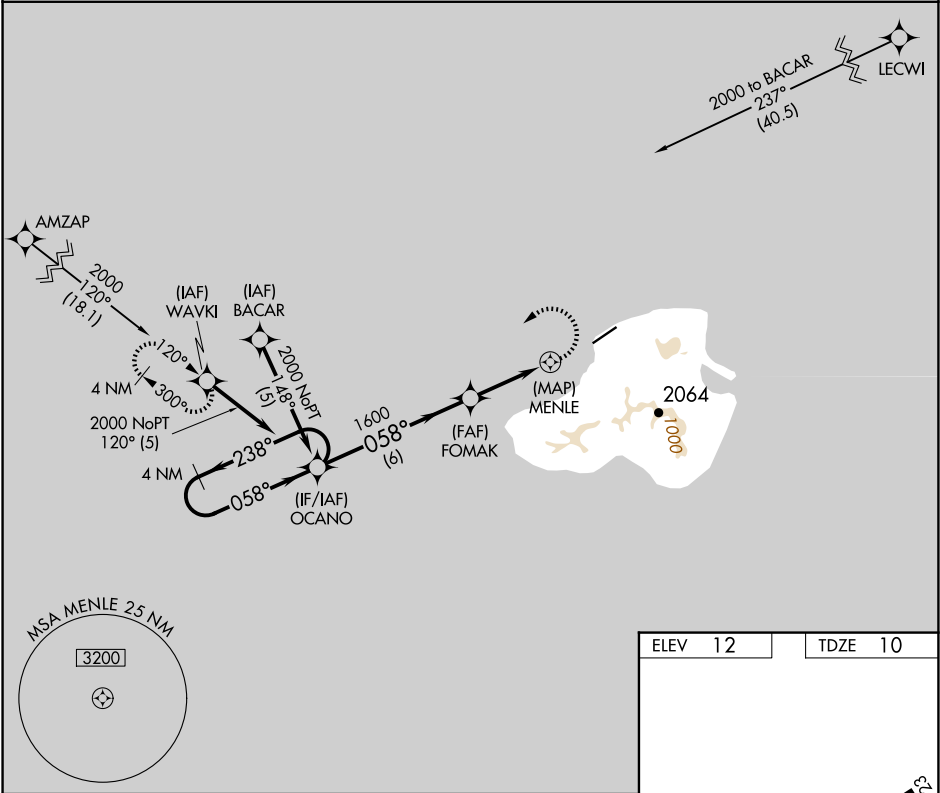
⚠

⚠

Circling not authorized southeast of Rwy 5-23.
Obtain local altimeter setting on CTAF; when not received,
procedure not authorized. DME/DME RNP-0.3 NA.
No controlled airspace below 5500.

MISSED APPROACH: Climbing left turn to 2000 direct
WAVKI WP and hold.

KOSRAE RADIO
123.6 (CTAF) 0



4 NM Holding Pattern

OCANO

FOMAK

MENLE

2000

1600

238°

058°

058°

3.00° TCH 50

6 NM

3.1 NM

1.7

CATEGORY	A	B	C	D
LNNAV MDA	460-2 450 (500-2)			
CIRCLING	520-2 508 (600-2)		580-2 568 (600-2)	

ELEV 12	TDZE 10
---------	---------

The inset chart shows the runway layout for RWY 5. The runway is 5752 feet long. The approach path is shown with a 058° heading. The chart also indicates the location of the runway relative to the island and the surrounding terrain.

MIRL Rwy 5-23 0
REIL Rwys 5 and 23 0

PAC: 12 JUN 2025 to 07 AUG 2025

PAC: 12 JUN 2025 to 07 AUG 2025