

WAAS CH 58326 W11A	APP CRS 110°	Rwy Idg TDZE Apt Elev 8900 7096 7096
--	------------------------	--

RNAV (GPS) RWY 11

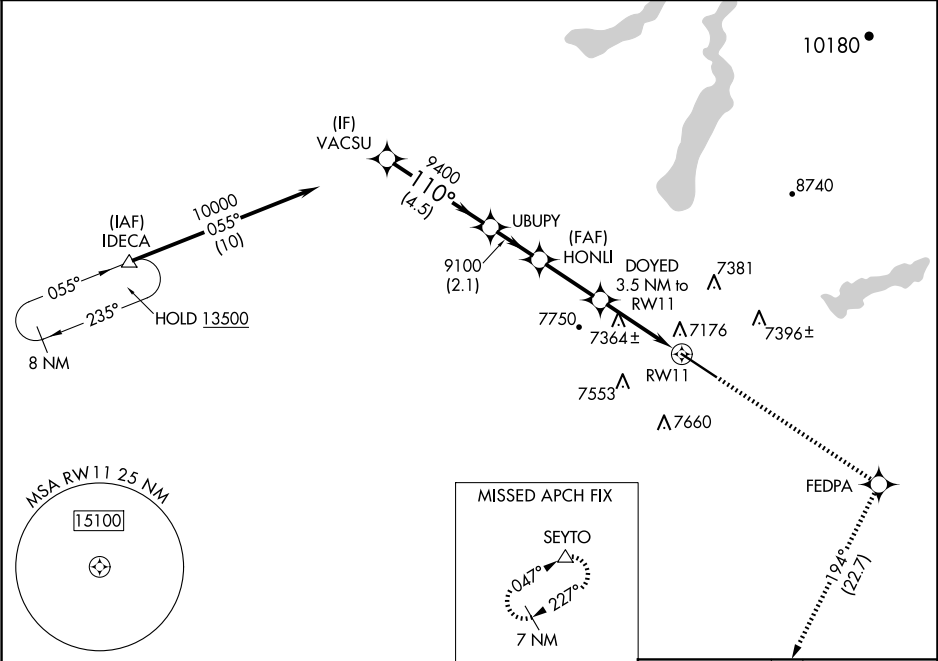
RALPH WENZ FLD (PNA)

▼ Baro-VNAV NA. When local altimeter setting not received, use Big Piney altimeter setting and increase LPV DA to 7404 feet and all visibilities ¼ SM; increase LNAV/VNAV DA to 7413 feet and all visibilities ¼ SM; increase all MDA 60 feet and LNAV Cat C/D visibility ¼ SM. Circling NA south of Rwy 11/29. DME/DME RNP- 0.3 NA. VDP NA with Big Piney altimeter setting.

ODALS

MISSED APPROACH: Climb to 10000 direct FEDPA and on track 194° to SEYTO and hold.

AWOS-3 118.325	SALT LAKE CENTER 128.35 239.25	UNICOM 122.8 (CTAF) 0
--------------------------	--	---------------------------------



VGSI and RNAV glidepath not coincident (VGSI Angle 2.83/TCH 40).

VACSU UBUYP HONLI DOYED RW11

10000 9400 9100 9100 *8260

GP 3.00° TCH 55

4.5 NM 2.1 NM 2.6 NM 2 NM 1.5 NM

10000 FEDPA tr 194° SEYTO

*LNAV only.

CATEGORY	A	B	C	D
LPV DA	7346-¾ 250 (300-¾)			
LNAV/VNAV DA	7355-¾ 259 (300-¾)			
LNAV MDA	7620-1 524 (600-1)	7620-1½ 524 (600-1½)		
CIRCLING	7640-1 544 (600-1)	7840-2¼ 744 (800-2¼)	7980-3 884 (900-3)	

ELEV 7096 TDZE 7096

MRL Rwy 11-29 0
REIL Rwys 11 and 29 0