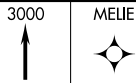
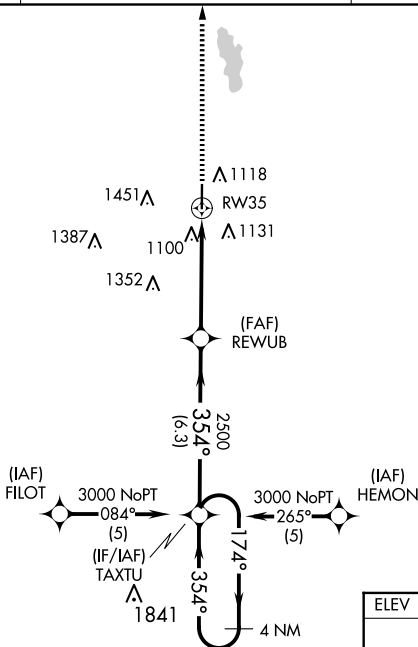
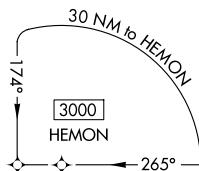
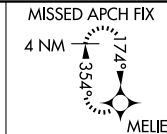
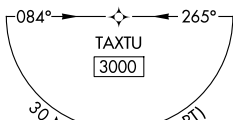
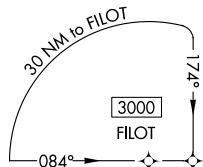


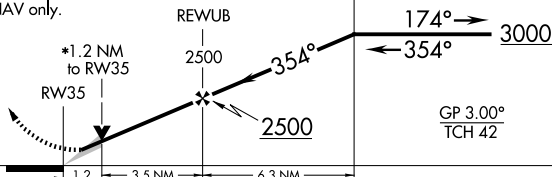
RNAV (GPS) RWY 35
PAULS VALLEY MUNI (PVJ)

When local altitude setting not received, use Ardmore Downtown Exec altimeter setting: increase all DA 97 feet and all MDA 100 feet; increase LPV and LNAV/VNAV all Cats visibility and LNAV Cats C/D and Circling Cat C visibility $\frac{1}{4}$ SM and Circling Cat D visibility $\frac{1}{2}$ SM. Baro-VNAV and VDP NA when using Ardmore Downtown Exec altimeter setting. For uncompensated Baro-VNAV systems, LNAV/VNAV NA below -16°C or above 46°C.

MISSED APPROACH:
Climb to 3000 direct
MELIE and hold.

UNICOM
122.8 (CTAF) **L**

VGSI and RNAV glidepath not coincident
(VGSI Angle 3.00/TCH 45).



CATEGORY	A	B	C	D
LPV DA	1156- ³ / ₄ 200 (200- ³ / ₄)			
LNAV/VNAV DA	1447-1 ³ / ₄ 491 (500-1 ³ / ₄)			
LNAV MDA	1360-1 404 (400-1)		1360-1 ¹ / ₄ 404 (400-1 ¹ / ₄)	
CIRCLING	1440-1 469 (500-1)		1540-1 ¹ / ₂ 569 (600-1 ¹ / ₂)	1760-2 ¹ / ₂ 789 (800-2 ¹ / ₂)

