

WAAS CH 93838 W27A	APP CRS 270°	Rwy Idg TDZE 1240 Apt Elev 1243
--	------------------------	---

RNAV (GPS) RWY 27

CUMBERLAND MUNI (UBE)

RNP APCH - GPS.

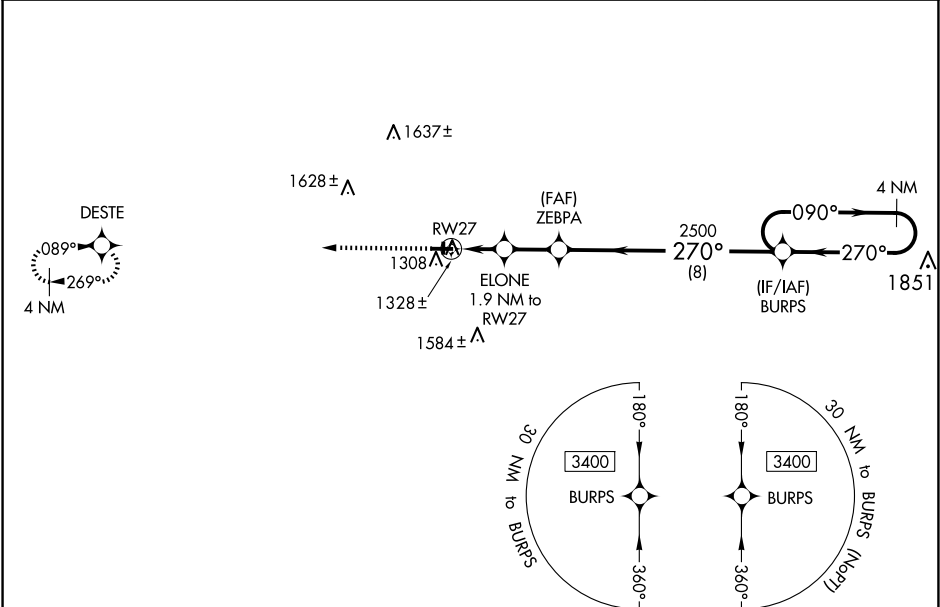
▼

▲

For uncompensated Baro-VNAV systems, LNAV/VNAV NA below -17°C or above 54°C. Baro-VNAV and VDP NA when using Rice Lake altimeter setting. Rwy 27 helicopter visibility reduction below ¾ SM NA. When local altimeter setting not received, use Rice Lake altimeter setting; increase LPV DA to 1533 feet and LNAV/VNAV DA to 1549 feet and all MDA 60 feet; increase LPV all Cats visibility and LNAV Cat C/D visibility ¼ mile; increase Circling Cat D visibility ¼ mile. Circling Rwy 18, 36 NA at night.

MISSED APPROACH:
Climb to 3400 direct
DESTE and hold.

AWOS-3PT 119.175	MINNEAPOLIS CENTER 125.3 335.6	GCO 121.725	UNICOM 122.8 (CTAF) 0
----------------------------	--	-----------------------	---------------------------------



ELEV 1243 TDZE 1240

REIL Rwy 9 and 27 0
MIRL Rwy 9-27 0

<div>3400 DESTE</div> <div></div>				
<div></div>				
CATEGORY	A	B	C	D
LPV DA	1490-1 250 (300-1)			
LNAV/ VNAV DA	1506-1 266 (300-1)			
LNAV MDA	1580-1 340 (400-1)			
CIRCLING	1640-1 397 (400-1)	1940-1 697 (700-1)	1940-2 697 (700-2)	1980-2 ¼ 737 (800-2 ¼)