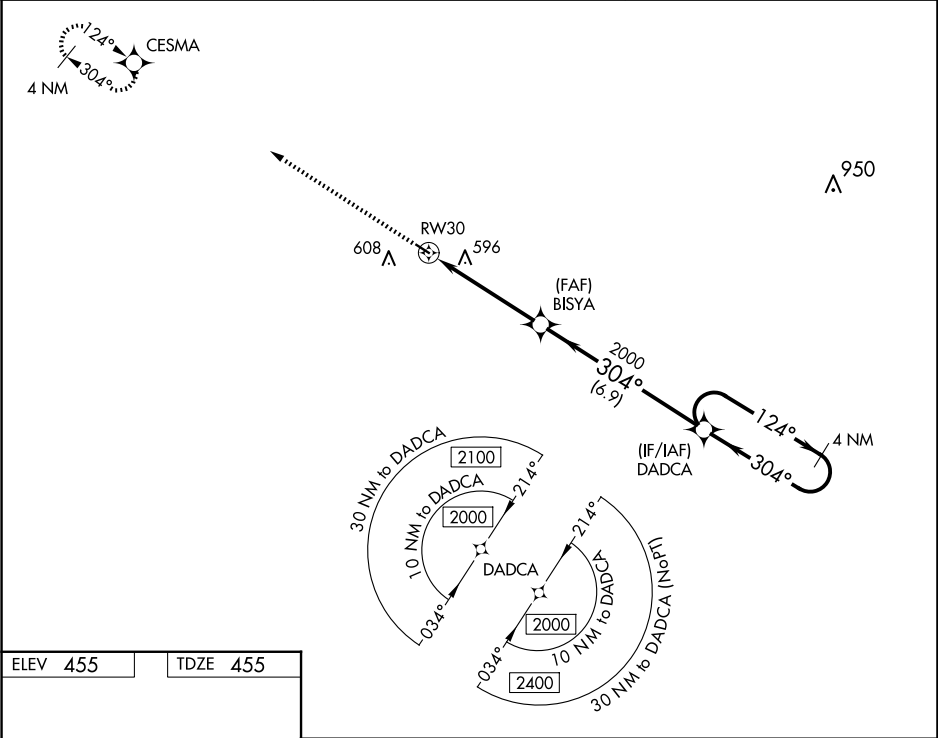


WAAS CH 61208 W30A	APP CRS 304°	Rwy Idg 3197 TDZE 455 Apt Elev 455	RNAV (GPS) RWY 30 PRENTISS-JEFFERSON DAVIS COUNTY (M43)
Baro-VNAV NA, DME/DME RNP-0.3 NA. Use Brookhaven altimeter setting; when not received, use Hattiesburg/Laurel altimeter setting and increase all DA 27 feet and all MDA 40 feet. Helicopter visibility reduction below ¾ SM NA.			MISSED APPROACH: Climb to 2000 direct CESMA and hold.
1R7 AWOS-3P 118.125	HOUSTON CENTER 126.8 327.8	UNICOM 122.8 (CTAF) 0	



ELEV 455		TDZE 455	
MIRL Rwy 12-30 0		VGSI and RNAV glidepath not coincident (VGSI Angle 2.75/TCH 45).	
2000 CESMA		BISYA 2000	
RW30		DADCA 4 NM Holding Pattern	
304° to RW30		2000 124° 304° 2000	
GP 3.00° TCH 30		4.8 NM 6.9 NM	
CATEGORY	A	B	C D
LPV DA	770-1 1/8	315 (400-1 1/8)	NA
LNAV/VNAV DA	797-1 1/4	342 (400-1 1/4)	NA
LNAV MDA	980-1	525 (600-1)	NA
CIRCLING	1020-1 565 (600-1)	1080-1 625 (700-1)	NA