

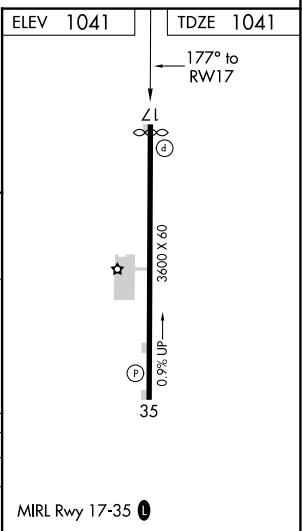
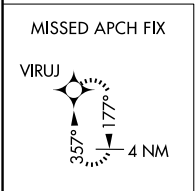
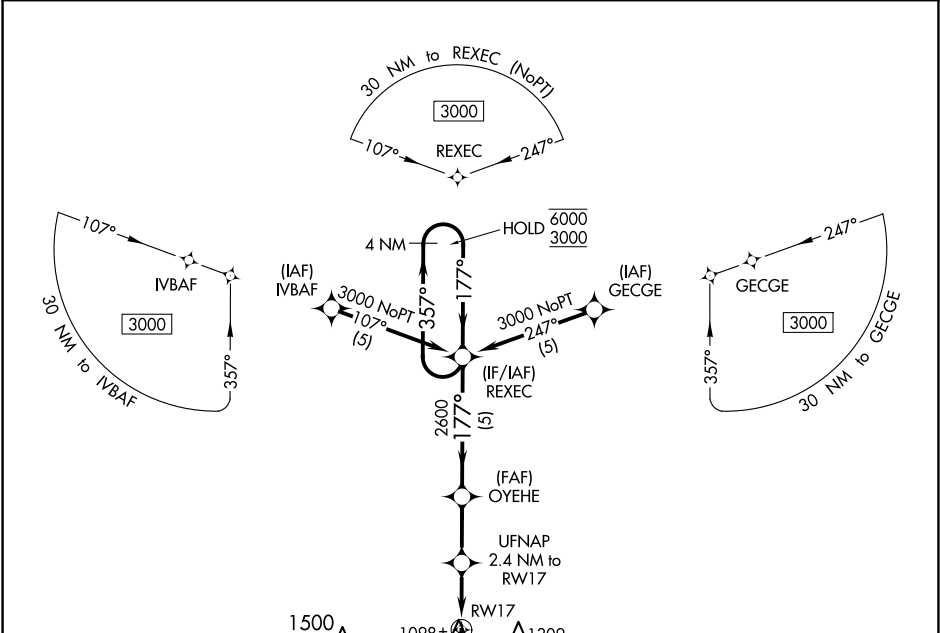
APP CRS	Rwy Idg	3490
177°	TDZE	1041
	Apt Elev	1041

RNAV (GPS) RWY 17

PRAGUE MUNI (O47)

RNP APCH.	Procedure NA at night. Rwy 17 helicopter visibility reduction below 1 SM NA. Use Shawnee altimeter setting. When not received, use Seminole altimeter setting.	MISSED APPROACH: Climb to 3000 direct VIRUJ and hold.
-----------	---	---

FORT WORTH CENTER 132.2 338.35	CTAF 122.9 0
-----------------------------------	-----------------



4 NM Holding Pattern		Visual Segment - Obstacles.		3000	VIRUJ
6000 ← 357°		REXEC		↑	
3000 → 177°		OYEHE		✧	
		UFNAP 2.4 NM to RWY 17		2600	
		RWY 17		1840	
		5 NM		2.4 NM	
CATEGORY	A	B	C	D	
LNAP MDA	1400-1	359 (400-1)		NA	
CIRCLING	1480-1 439 (500-1)	1500-1 459 (500-1)	1720-2 679 (700-2)	NA	