

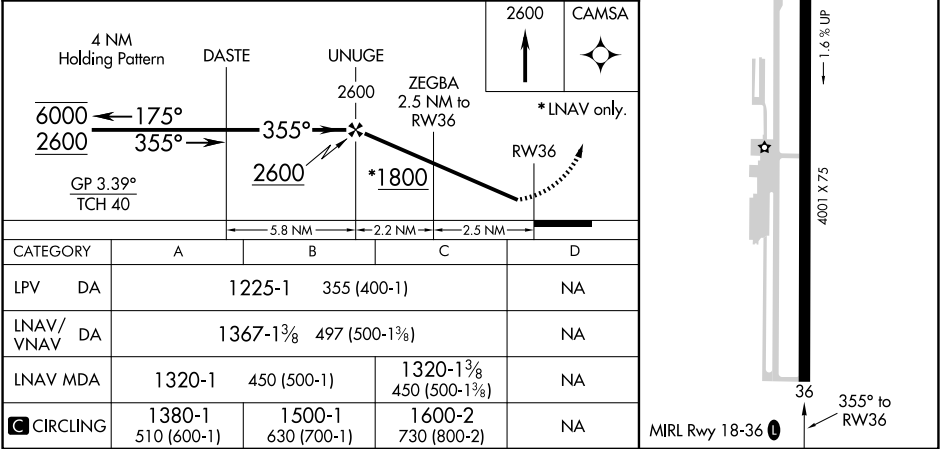
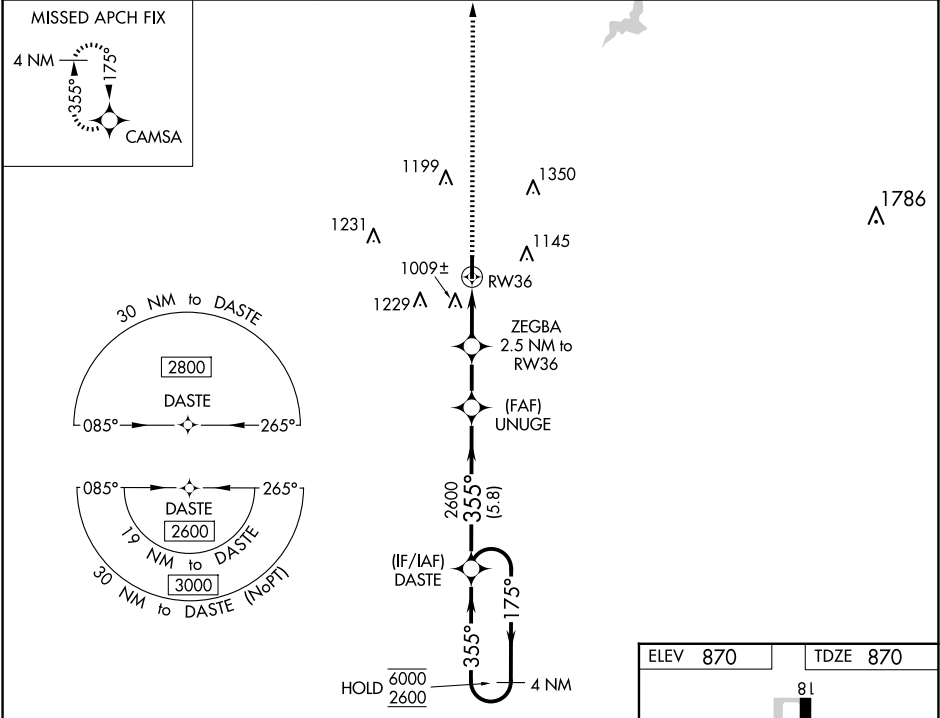
WAAS CH 72843 W36A	APP CRS 355°	Rwy Idg 4001 TDZE 870 Apt Elev 870
--	------------------------	---

RNAV (GPS) RWY 36

JONES MEML (3F7)

RNP APCH. ▼ Rwy 36 helicopter visibility reduction below ¾ SM NA. ▲ NA Baro-VNAV NA. Use Cushing altimeter setting.	MISSED APPROACH: Climb to 2600 direct CAMSA and hold.
---	---

CUH AWOS-3 118.25	KANSAS CITY CENTER 127.8 319.1	CTAF 122.9 0
-----------------------------	--	------------------------



SC-1, 10 JUL 2025 to 07 AUG 2025

SC-1, 10 JUL 2025 to 07 AUG 2025