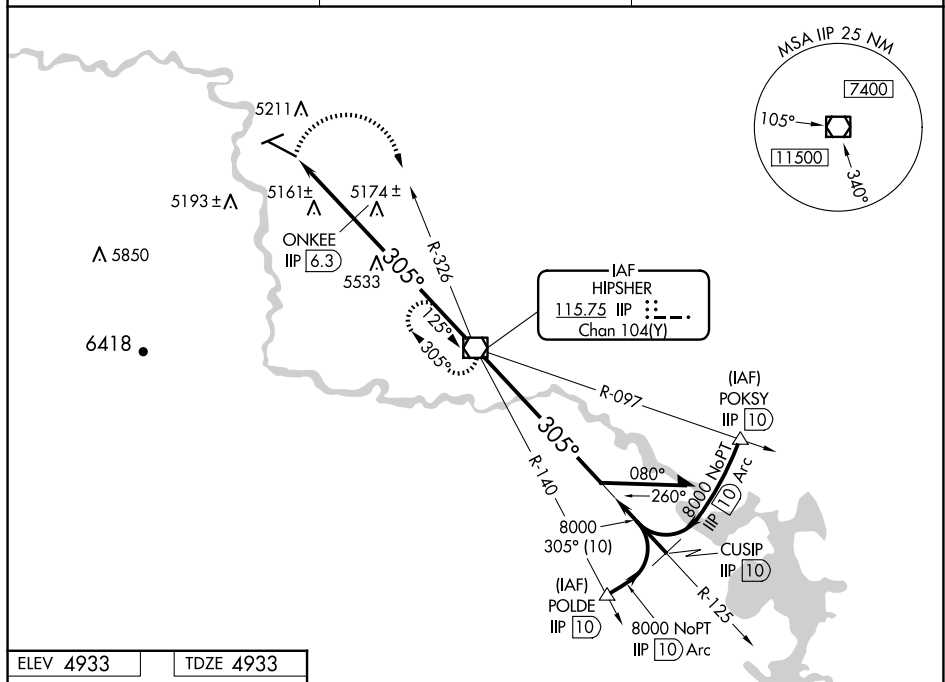


VOR/DME IIP 115.75 Chan 104(Y)	APP CRS 305°	Rwy Idg 6534 TDZE 4933 Apt Elev 4933
--	------------------------	---

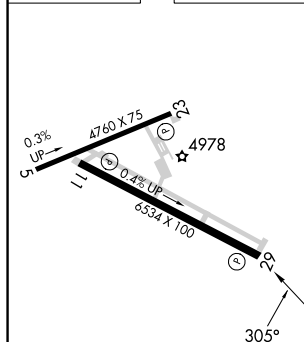
VOR RWY 29
CONVERSE COUNTY (DGW)

MISSED APPROACH: Climbing right turn to 8000 via heading 160° and IIP VOR/DME R-326 to IIP VOR/DME and hold, continue climb-in-hold to 8000.

ASOS 135.225	DENVER CENTER 135.6 363.025	UNICOM 122.8 (CTAF) 0
------------------------	---------------------------------------	---------------------------------



ELEV 4933		TDZE 4933
-----------	--	-----------

REIL Rwy 11 and 29 **L**MIRL Rwy 11-29 and 5-23 **L**

FAF to MAP 9.4 NM

Knots	60	90	120	150	180
Min:Sec	9:24	6:16	4:42	3:46	3:08

The diagram illustrates a VOR/DME station at ONKKE 6.3. Key features include:

- VOR/DME Station:** Located at ONKKE 6.3, indicated by a star symbol.
- Angles and Distances:**
 - A bearing of 160° is shown from the top left towards the station.
 - An angle of 125° is shown between two paths originating from the station.
 - An angle of 305° is shown relative to the 8000 frequency.
 - A distance of $\frac{1}{4}$ NM is marked along one path.
 - A distance of 6.3 NM is marked from the station to a point labeled "ONKKE".
 - A distance of 1.7 is marked between two points.
 - A distance of 1.4 is marked between two points.
 - A distance of 5960 is marked along a path.
 - A distance of 9.4 is marked near a point labeled "IIP".
 - A distance of 8 is marked near a point labeled "IIP".
 - A distance of 9.4 is marked near a point labeled "IIP".
 - A distance of 8.326 is marked near a point labeled "IIP".
- Other Labels:**
 - "VGS1 and descent angles not coincident (VGS1 Angle 3.00/TCH 45)." is noted at the top right.
 - "Remain within 10 NM" is noted near the 125° angle.
 - "hdg 160° " is noted near the top left arrow.
 - " $\leq 3.03^\circ$ TCH 40" is noted near the station.
 - "8000" is noted twice, likely referring to frequencies or altitudes.