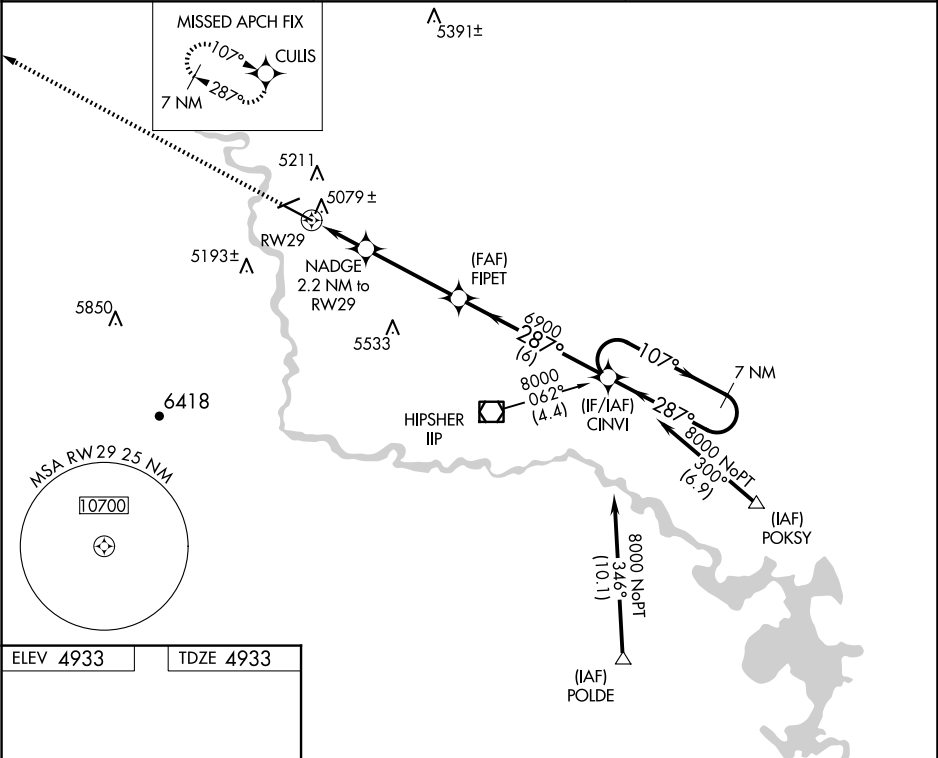


RNP APCH-GPS.

▼ For uncompensated Baro-VNAV systems, LNAV/VNAV
▲ NA below -24°C or above 39°C.

MISSED APPROACH: Climb to 8000 direct CULIS and hold.

ASOS 135.225	DENVER CENTER 135.6 363.025	UNICOM 122.8 (CTAF) 0
------------------------	---------------------------------------	---------------------------------



8000

↑

CULIS

VGSI and RNAV glidepath not coincident
(VGSI Angle 3.00/TCH 45).

7 NM Holding Pattern

NADGE
2.2 NM to
RW29

FIPET
6900

CINVI

8000

GP 3.00°
TCH 39

*LNAV only

*1.5 NM to
RW29

5660*

6900

287°

107°

287°

1.5

0.7

3.8 NM

6 NM

CATEGORY	A		B		C		D	
LPV DA			5133- ³ / ₄		200 (200- ³ / ₄)			
LNAV/VNAV DA			5369-1½		436 (500-1½)			
LNAV MDA	5440-1		507 (600-1)		5440-1½		507 (600-1½)	
CIRCLING	5520-1		587 (600-1)		5680-2¼ 747 (800-2¼)		5820-3 887 (900-3)	

REIL Rwy 11 and 29

MIRL Rwy 11-29 and 5-23