

DOUGLAS, WYOMING

AL-6870 (FAA)

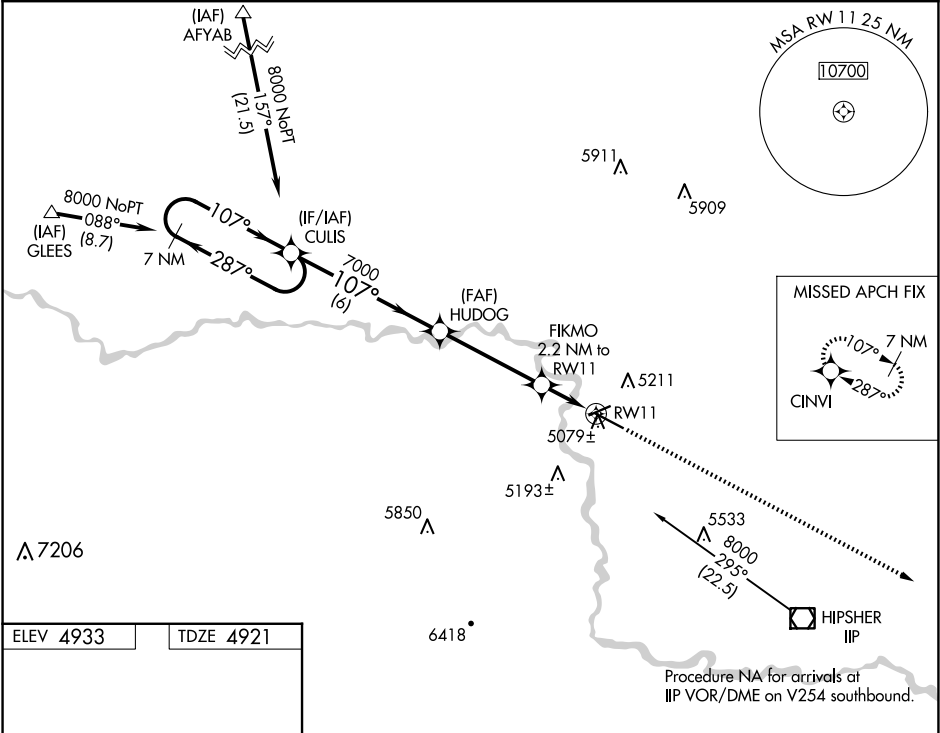
22027

WAAS CH 58018 W11A	APP CRS 107°	Rwy Idg TDZE Apt Elev 6534 4921 4933
--	------------------------	--

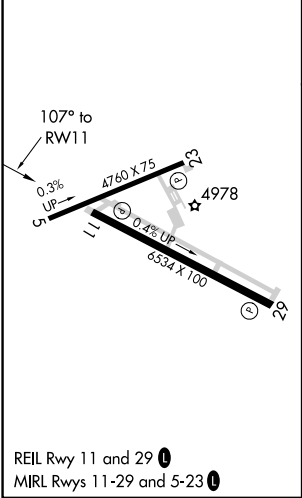
RNAV (GPS) RWY 11
CONVERSE COUNTY (DGW)

RNP APCH. ▼ For uncompensated Baro-VNAV systems, LNAV/VNAV NA below -24°C (-11°F) or above 39°C (102°F).	MISSED APPROACH: Climb to 8000 direct CINVI and hold.
---	---

ASOS 135.225	DENVER CENTER 135.6 363.025	UNICOM 122.8 (CTAF) 0
------------------------	---------------------------------------	---------------------------------



ELEV 4933	TDZE 4921
-----------	-----------



		8000		CINVI		
		7 NM Holding Pattern		VGSi and RNAV glidepath not coincident (VGSi Angle 3.00/TCH 33).		
		GP 3.00° TCH 40		*LNAV only		
		6 NM		4.1 NM		
		0.9 NM		1.3 NM		
CATEGORY	A	B	C	D		
LPV DA	5121-3/4 200 (200-3/4)					
LNAV/VNAV DA	5329-1 1/2 408 (400-1 1/2)					
LNAV MDA	5340-1 419 (500-1)		5340-1 1/4 419 (500-1 1/4)			

DOUGLAS, WYOMING
Orig-A 07NOV19

42°48'N-105°23'W

CONVERSE COUNTY (DGW)
RNAV (GPS) RWY 11

NW-1, 10 JUL 2025 to 07 AUG 2025

NW-1, 10 JUL 2025 to 07 AUG 2025