



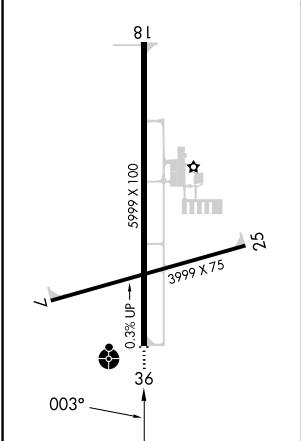
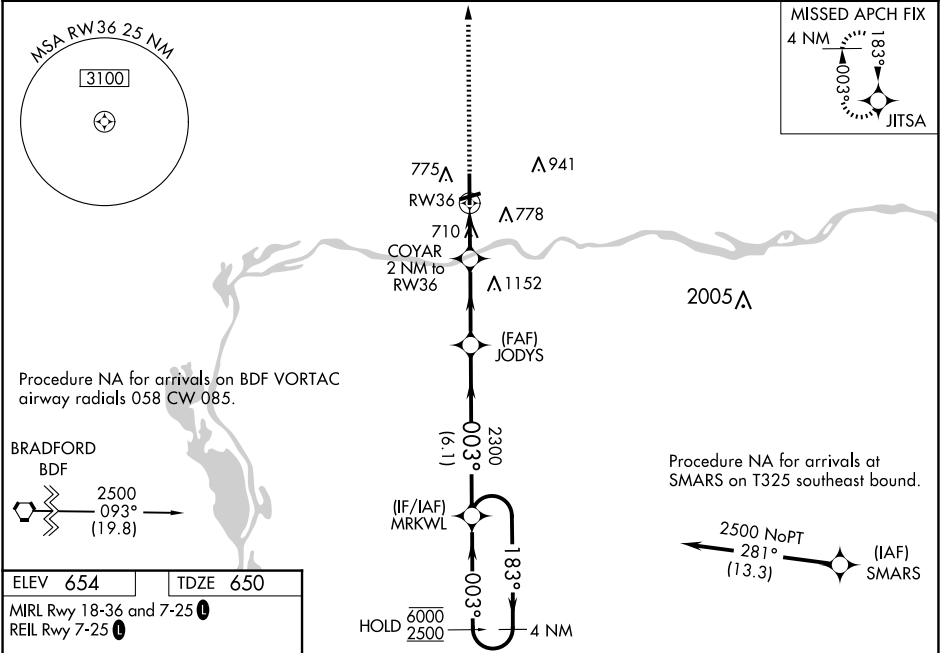




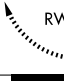
WAAS CH <b>82037</b> <b>W36A</b>	APP CRS <b>003°</b>	Rwy ldg TDZE <b>5999</b> Apt Elev <b>654</b>
--	------------------------	--

RNAV (GPS) RWY 36

ILLINOIS VALLEY RGNL-WALTER A DUNCAN FLD (VYS)

RNP APCH - GPS.		<div>ODALS</div> <div></div>	MISSED APPROACH: Climb to 2500 direct JITS A and hold.
<div><div></div><div>Inop table does not apply. For uncompensated Baro-VNAV systems, LNAV/VNAV NA below -16°C or above 54°C.</div></div>			
AWOS-3 120.025	CHICAGO CENTER 123.75 259.1	UNICOM 123.0 (CTAF) 	



2500		JITSA		4 NM Holding Pattern	
					
		RW36		MRKWL	
1.1		0.9		183° → 6000	
1.1 NM to RW36		COYAR 2 NM to RW36		← 003° 2500	
1300		JODYS 2300		GP 3.00° TCH 40	
1.1		0.9		003°	
1.1 NM to RW36		COYAR 2 NM to RW36		2300	
1.1		0.9		6.1 NM	
1.1 NM to RW36		COYAR 2 NM to RW36		3.1 NM	
1.1 NM to RW36		COYAR 2 NM to RW36		6.1 NM	
1.1 NM to RW36		COYAR 2 NM to RW36		3.1 NM	
1.1 NM to RW36		COYAR 2 NM to RW36		6.1 NM	
1.1 NM to RW36		COYAR 2 NM to RW36		3.1 NM	
1.1 NM to RW36		COYAR 2 NM to RW36		6.1 NM	
1.1 NM to RW36		COYAR 2 NM to RW36		3.1 NM	
1.1 NM to RW36		COYAR 2 NM to RW36		6.1 NM	
1.1 NM to RW36		COYAR 2 NM to RW36		3.1 NM	
1.1 NM to RW36		COYAR 2 NM to RW36		6.1 NM	
1.1 NM to RW36		COYAR 2 NM to RW36		3.1 NM	
1.1 NM to RW36		COYAR 2 NM to RW36		6.1 NM	
1.1 NM to RW36		COYAR 2 NM to RW36		3.1 NM	
1.1 NM to RW36		COYAR 2 NM to RW36		6.1 NM	
1.1 NM to RW36		COYAR 2 NM to RW36		3.1 NM	
1.1 NM to RW36		COYAR 2 NM to RW36		6.1 NM	
1.1 NM to RW36		COYAR 2 NM to RW36		3.1 NM	
1.1 NM to RW36		COYAR 2 NM to RW36		6.1 NM	
1.1 NM to RW36		COYAR 2 NM to RW36		3.1 NM	
1.1 NM to RW36		COYAR 2 NM to RW36		6.1 NM	
1.1 NM to RW36		COYAR 2 NM to RW36		3.1 NM	
1.1 NM to RW36		COYAR 2 NM to RW36		6.1 NM	
1.1 NM to RW36		COYAR 2 NM to RW36		3.1 NM	
1.1 NM to RW36		COYAR 2 NM to RW36		6.1 NM	
1.1 NM to RW36		COYAR 2 NM to RW36		3.1 NM	
1.1 NM to RW36		COYAR 2 NM to RW36		6.1 NM	
1.1 NM to RW36		COYAR 2 NM to RW36		3.1 NM	
1.1 NM to RW36		COYAR 2 NM to RW36		6.1 NM	
1.1 NM to RW36		COYAR 2 NM to RW36		3.1 NM	
1.1 NM to RW36		COYAR 2 NM to RW36		6.1 NM	
1.1 NM to RW36		COYAR 2 NM to RW36		3.1 NM	
1.1 NM to RW36		COYAR 2 NM to RW36		6.1 NM	
1.1 NM to RW36		COYAR 2 NM to RW36		3.1 NM	
1.1 NM to RW36		COYAR 2 NM to RW36		6.1 NM	
1.1 NM to RW36		COYAR 2 NM to RW36		3.1 NM	
1.1 NM to RW36		COYAR 2 NM to RW36		6.1 NM	
1.1 NM to RW36		COYAR 2 NM to RW36		3.1 NM	
1.1 NM to RW36		COYAR 2 NM to RW36		6.1 NM	
1.1 NM to RW36		COYAR 2 NM to RW36		3.1 NM	
1.1 NM to RW36		COYAR 2 NM to RW36		6.1 NM	
1.1 NM to RW36		COYAR 2 NM to RW36		3.1 NM	
1.1 NM to RW36		COYAR 2 NM to RW36		6.1 NM	
1.1 NM to RW36		COYAR 2 NM to RW36		3.1 NM	
1.1 NM to RW36		COYAR 2 NM to RW36		6.1 NM	
1.1 NM to RW36		COYAR 2 NM to RW36		3.1 NM	
1.1 NM to RW36		COYAR 2 NM to RW36		6.1 NM	
1.1 NM to RW36		COYAR 2 NM to RW36		3.1 NM	
1.1 NM to RW36		COYAR 2 NM to RW36		6.1 NM	
1.1 NM to RW36		COYAR 2 NM to RW36		3.1 NM	
1.1 NM to RW36		COYAR 2 NM to RW36		6.1 NM	
1.1 NM to RW36		COYAR 2 NM to RW36		3.1 NM	
1.1 NM to RW36		COYAR 2 NM to RW36		6.1 NM	
1.1 NM to RW36		COYAR 2 NM to RW36		3.1 NM	
1.1 NM to RW36		COYAR 2 NM to RW36		6.1 NM	
1.1 NM to RW36		COYAR 2 NM to RW36		3.1 NM	
1.1 NM to RW36		COYAR 2 NM to RW36		6.1 NM	
1.1 NM to RW36		COYAR 2 NM to RW36		3.1 NM	
1.1 NM to RW36		COYAR 2 NM to RW36		6.1 NM	
1.1 NM to RW36		COYAR 2 NM to RW36		3.1 NM	
1.1 NM to RW36		COYAR 2 NM to RW36		6.1 NM	
1.1 NM to RW36		COYAR 2 NM to RW36		3.1 NM	
1.1 NM to RW36		COYAR 2 NM to RW36		6.1 NM	
1.1 NM to RW36		COYAR 2 NM to RW36		3.1 NM	
1.1 NM to RW36		COYAR 2 NM to RW36		6.1 NM	
1.1 NM to RW36		COYAR 2 NM to RW36		3.1 NM	
1.1 NM to RW36		COYAR 2 NM to RW36		6.1 NM	
1.1 NM to RW36		COYAR 2 NM to RW36		3.1 NM	
1.1 NM to RW36		COYAR 2 NM to RW36		6.1 NM	
1.1 NM to RW36		COYAR 2 NM to RW36		3.1 NM	
1.1 NM to RW36		COYAR 2 NM to RW36		6.1 NM	
1.1 NM to RW36		COYAR 2 NM to RW36		3.1 NM	
1.1 NM to RW36		COYAR 2 NM to RW36		6.1 NM	
1.1 NM to RW36		COYAR 2 NM to RW36		3.1 NM	
1.1 NM to RW36		COYAR 2 NM to RW36		6.1 NM	
1.1 NM to RW36		COYAR 2 NM to RW36		3.1 NM	
1.1 NM to RW36		COYAR 2 NM to RW36		6.1 NM	
1.1 NM to RW36		COYAR 2 NM to RW36		3.1 NM	
1.1 NM to RW36		COYAR 2 NM to RW36		6.1 NM	
1.1 NM to RW36		COYAR 2 NM to RW36		3.1 NM	
1.1 NM to RW36		COYAR 2 NM to RW36		6.1 NM	
1.1 NM to RW36		COYAR 2 NM to RW36		3.1 NM	
1.1 NM to RW36		COYAR 2 NM to RW36		6.1 NM	
1.1 NM to RW36		COYAR 2 NM to RW36		3.1 NM	
1.1 NM to RW36		COYAR 2 NM to RW36		6.1 NM	
1.1 NM to RW36		COYAR 2 NM to RW36		3.1 NM	
1.1 NM to RW36		COYAR 2 NM to RW36		6.1 NM	
1.1 NM to RW36		COYAR 2 NM to RW36		3.1 NM	
1.1 NM to RW36		COYAR 2 NM to RW36		6.1 NM	
1.1 NM to RW36		COYAR 2 NM to RW36		3.1 NM	
1.1 NM to RW36		COYAR 2 NM to RW36		6.1 NM	
1.1 NM to RW36		COYAR 2 NM to RW36		3.1 NM	
1.1 NM to RW36		COYAR 2 NM to RW36		6.1 NM	
1.1 NM to RW36		COYAR 2 NM to RW36		3.1 NM	
1.1 NM to RW36		COYAR 2 NM to RW36		6.1 NM	
1.1 NM to RW36		COYAR 2 NM to RW36		3.1 NM	
1.1 NM to RW36		COYAR 2 NM to RW36		6.1 NM	
1.1 NM to RW36		COYAR 2 NM to RW36		3.1 NM	
1.1 NM to RW36		COYAR 2 NM to RW36		6.1 NM	
1.1 NM to RW36		COYAR 2 NM to RW36		3.1 NM	
1.1 NM to RW36		COYAR 2 NM to RW36		6.1 NM	
1.1 NM to RW36		COYAR 2 NM to RW36		3.1 NM	
1.1 NM to RW36		COYAR 2 NM to RW36		6.1 NM	
1.1 NM to RW36		COYAR 2 NM to RW36		3.1 NM	
1.1 NM to RW36		COYAR 2 NM to RW36		6.1 NM	
1.1 NM to RW36		COYAR 2 NM to RW36		3.1 NM	
1.1 NM to RW36		COYAR 2 NM to RW36		6.1 NM	
1.1 NM to RW36		COYAR 2 NM to RW36		3.1 NM	
1.1 NM to RW36		COYAR 2 NM to RW36		6.1 NM	
1.1 NM to RW36		COYAR 2 NM to RW36		3.1 NM	
1.1 NM to RW36		COYAR 2 NM to RW36		6.1 NM	
1					