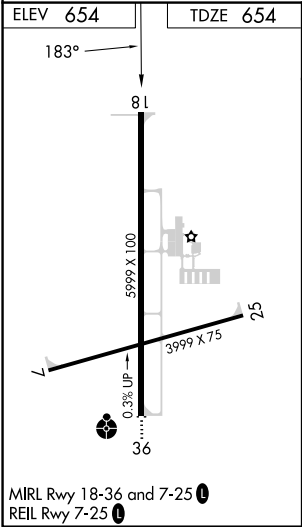
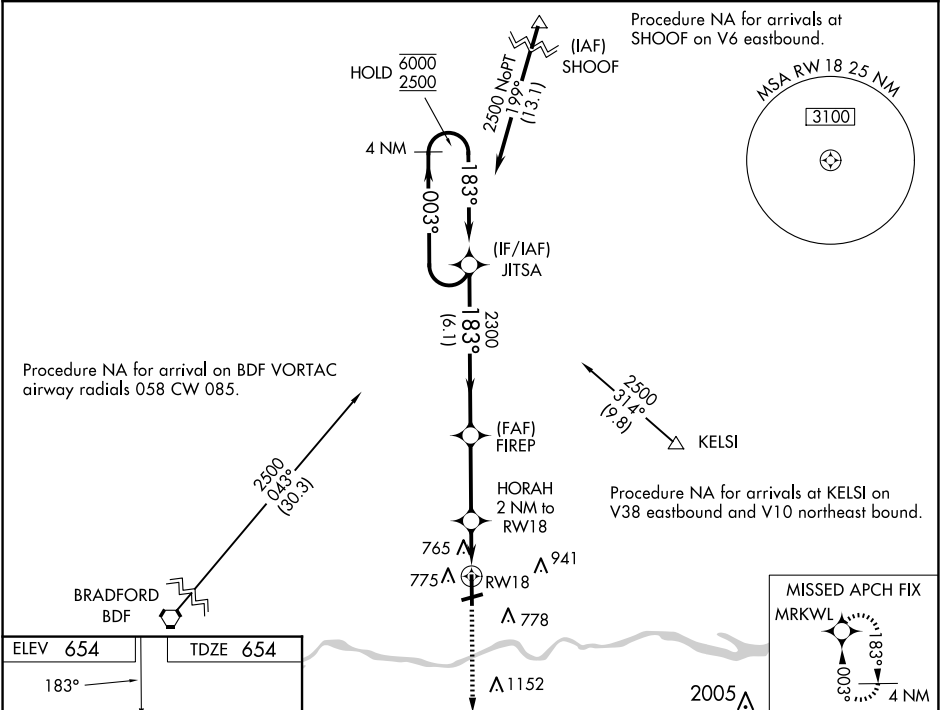


WAAS CH 86937 W18A	APP CRS 183°	Rwy Idg TDZE 654 Apt Elev 654	5999
--	------------------------	---	-------------

RNAV (GPS) RWY 18

ILLINOIS VALLEY RGNL-WALTER A DUNCAN FLD (VYS)

RNP APCH - GPS.		MISSED APPROACH: Climb to 2500 direct MRKWL and hold.
<div><div><div>▼</div><div>▲</div></div><div>Rwy 18 helicopter visibility reduction below $\frac{3}{4}$ SM NA. For uncompensated Baro-VNAV systems, LNAV/VNAV NA below -16°C or above 54°C.</div></div>		
AWOS-3 120.025	CHICAGO CENTER 123.75 259.1	UNICOM 123.0 (CTAF) 0



ELEV 654 TDZE 654		2500 MRKWL		JITSA Holding Pattern	
183°		1 NM to RW18		003° → 6000 ← 183° 2500	
81		FIREP 2300		GP 3.00° TCH 40	
5999 X 100		1 NM		3.1 NM	
3999 X 75		1 NM		6.1 NM	
0.3% UP		RW18		JITSA	
36		1320		2300	
MIRL Rwy 18-36 and 7-25		CATEGORY		A	
REIL Rwy 7-25		LPV DA		939-1 285 (300-1)	
		LNAV/VNAV DA		926-1 272 (300-1)	
		LNAV MDA		1020-1 366 (400-1)	
		CIRCLING		1120-1 466 (500-1)	1240-1 586 (600-1)
				1260-1 606 (700-1 3/4)	1460-2 1/2 806 (900-2 1/2)

EC-3, 10 JUL 2025 to 07 AUG 2025

EC-3, 10 JUL 2025 to 07 AUG 2025