

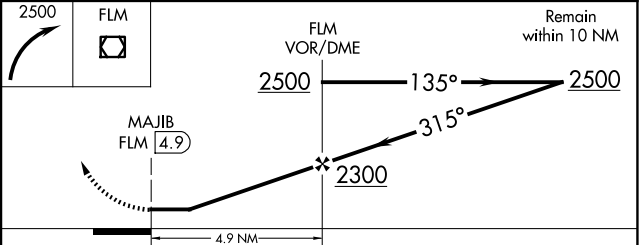
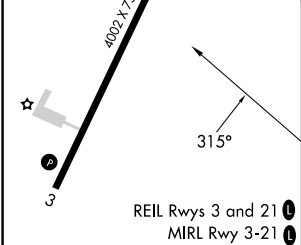
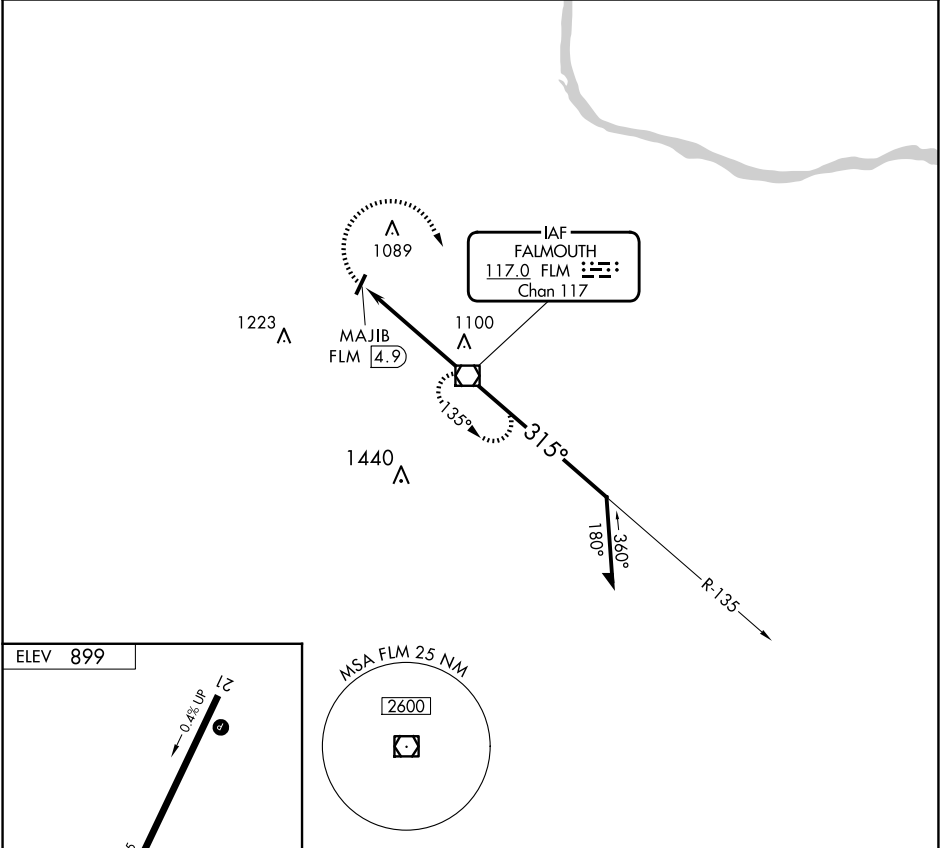
VOR/DME FLM	APP CRS	Rwy Idg	N/A
117.0	315°	TDZE	N/A
Chan 117		Apt Elev	899

VOR-A

GENE SNYDER (K62)

<div><div>▼</div><div>▲NA</div></div>	Night landing: Rwy 03 NA. When local alimeter setting not received, use Cincinnati/Northern Kentucky Intl altimeter setting and increase all MDA 60 feet. Helicopter visibility reduction below 1 SM NA.	MISSED APPROACH: Climbing right turn to 2500 direct FLM VOR/DME and hold.
---------------------------------------	--	---

AWOS-3 123.825	CINCINNATI APP CON 121.0 254.25	UNICOM 122.7 (CTAF) 0
--------------------------	---	---------------------------------



FAF to MAP 4.9 NM						CATEGORY	A	B	C	D
Knots	60	90	120	150	180	CIRCLING	1400-1	501 (600-1)		NA
Min:Sec	4:54	3:16	2:27	1:58	1:38					