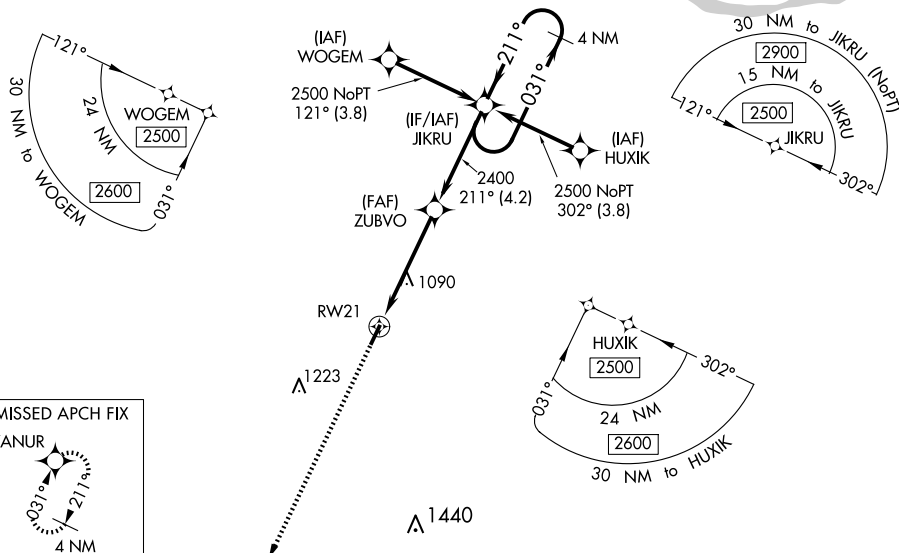




RNAV (GPS) RWY 21

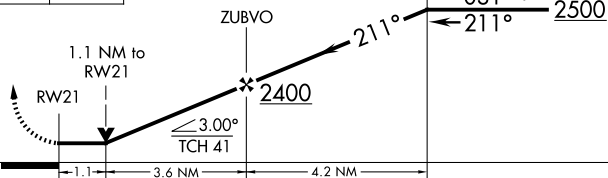
MISSED APPROACH:
Climb to 2600 direct
YANUR and hold.


UNICOM
122.7 (CTAF) **L**

211° →

2600	YANUR
	

VGSI and descent angles not coincident (VGSI Angle 3.50/TCH 39).

4 NM
Holding Pattern

CATEGORY	A	B	C	D
IP MDA	1340-1	441 (500-1)	NA	
INAV MDA	1360-1	461 (500-1)	NA	
 CIRCLING	1400-1	501 (600-1)	NA	

GENE SNYDER (K62)

RNAV (GPS) RWY 21

SE-1, 10 JUL 2025 to 07 AUG 2025