

WAAS CH 99444 W32A	APP CRS 336°	Rwy Idg 4299 TDZE 1821 Apt Elev 1821
--	------------------------	---

RNAV (GPS) RWY 32

STEPHEN A BEAN MUNI (8BØ)

RNP APCH - GPS.

⚠

⚠

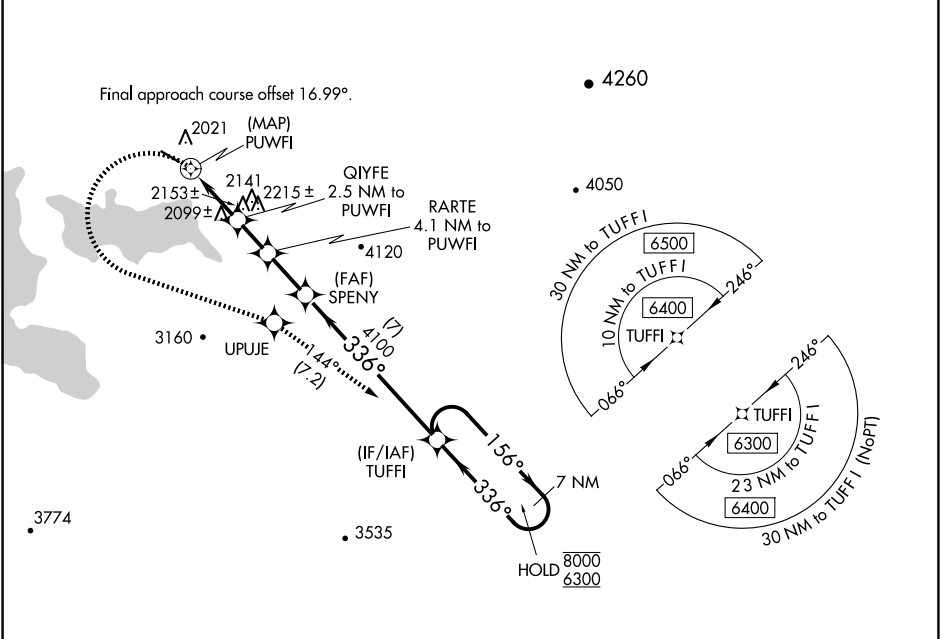
⚠

-30°C

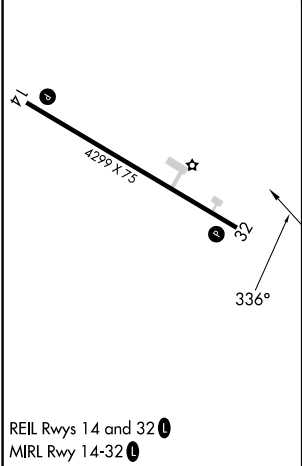
Circling NA for Cat C northeast of Rwy 14-32. Procedure NA at night. Rwy 32 helicopter visibility reduction below 1 SM NA.

MISSED APPROACH: Climbing left turn to 6300 direct UPUJE and track 144° to TUFFI and hold, continue climb-in-hold to 6300.

AWOS-3PT 118.0	BOSTON CENTER 124.25 290.5	UNICOM 122.8 (CTAF) Ø
--------------------------	--------------------------------------	---------------------------------



ELEV 1821	TDZE 1821
-----------	-----------



6300

UPUJE

tr 144°

TUFFI

VGSI and descent angles not coincident (VGSI Angle 3.00/TCH 40).

7 NM Holding Pattern

336°

156°

8000

6300

4100

3420

2860

3.20° TCH 40

4.1 NM to PUFWI

2.5 NM to PUFWI

SPENY

RARTE

UPUJE

QIYFE

PUFWI

0.5

2.5 NM

1.6 NM

2 NM

7 NM

CATEGORY	A	B	C	D
LP MDA	2560-1	739 (800-1)	2560-2 739 (800-2)	NA
LNAV MDA	2640-1 819 (900-1)	2640-1¼ 819 (900-1¼)	2640-2½ 819 (900-2½)	NA
CIRCLING	2640-1¼	819 (900-1¼)	2640-2½ 819 (900-2½)	NA