

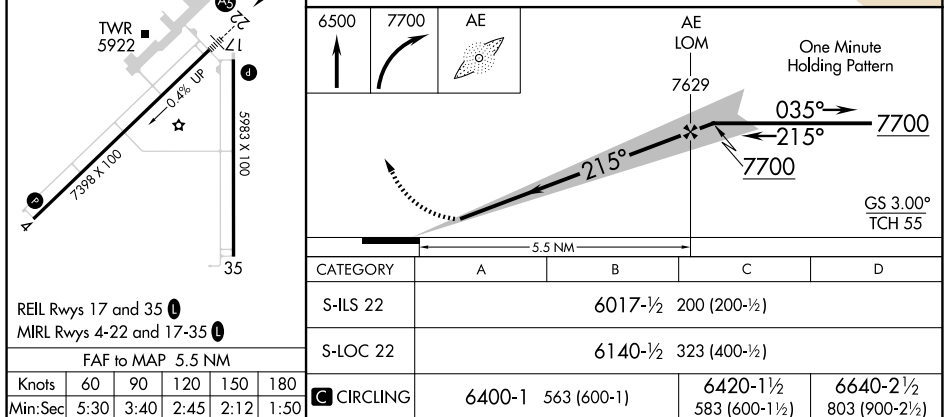
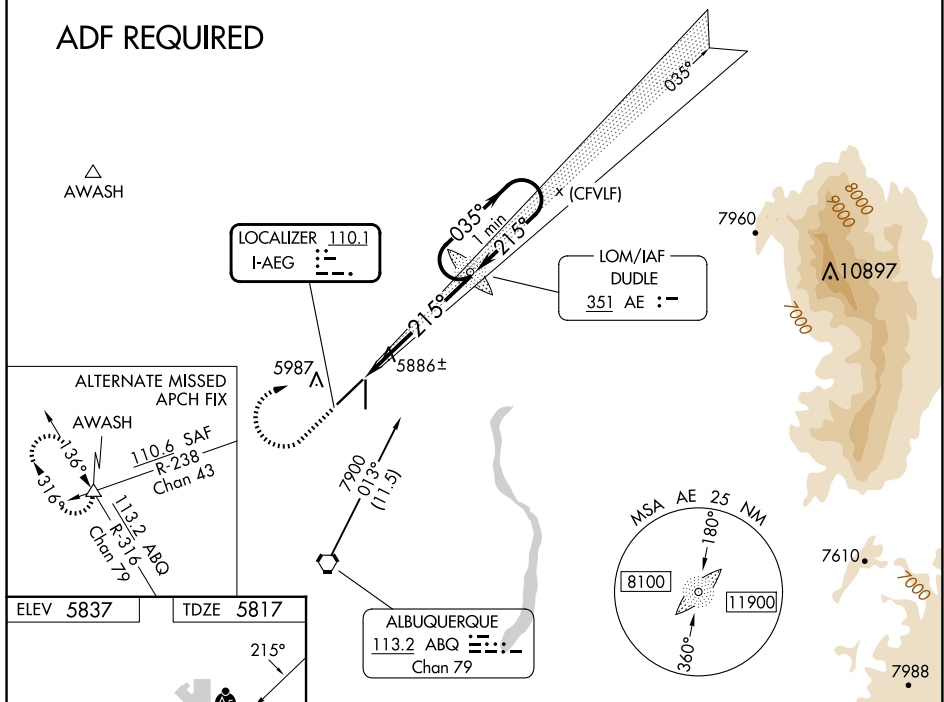


| | | | |
|----------------------------------|------------------------|-----------------------------|---|
| LOC I-AEG <u>110.1</u> | APP CRS 215° | Rwy Idg TDZE Apt Elev | 7398 5817 5837 |
|----------------------------------|------------------------|-----------------------------|---|

ILS or LOC RWY 22
DOUBLE EAGLE II (AEG)

| | | | | | |
|--|--|---|---|--|---|
|  NA | When local altimeter setting not received, use Albuquerque Intl Support altimeter setting and increase all DA 94 feet, increase all MDA 100 feet, and increase visibility S-LOC 22 Cats C/D ¼ mile, Circling Cats C/D ½ mile. For inop MALSR set using Albuquerque Intl Support altimeter setting, increase visibility S-ILS 22 all Cats ¾ mile. | | | MALSR  | MISSED APPROACH: Climb to 6500 then climbing right turn 7700 direct DUDLE LOM and hold. |
| | ATIS 119.025 | ALBUQUERQUE APP CON 127.4 253.5 | DOUBLE EAGLE II TOWER ★ 120.15 (CTAF) 0 | GND CON 121.625 | CLNC DEL 124.8 (When twr closed) |

ADF REQUIRED



ALBUQUERQUE, NEW MEXICO

Amdt 3A 11AUG22

35°09'N-106°48'W

DOUBLE EAGLE II (AEG)
ILS or LOC RWY 22

SW-1, 10 JUL 2025 to 07 AUG 2025

SW-1, 10 JUL 2025 to 07 AUG 2025