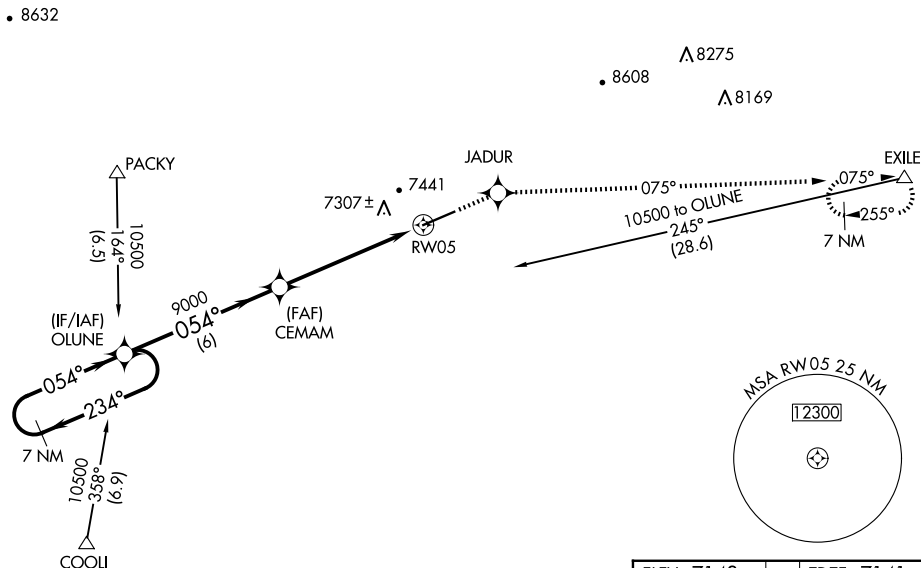


WAAS CH 78302 W05A	APP CRS 054°	Rwy Idg 7300 TDZE 7141 Apt Elev 7143
--	------------------------	---

RNAV (GPS) RWY 5

EVANSTON-UINTA COUNTY BURNS FLD (EVW)

RNP APCH.		MISSED APPROACH: Climb to 12000 direct JADUR and via 075° track to EXILE and hold, continue climb-in-hold to 12000.	
▼ If local altimeter setting not received, procedure NA. For uncompensated Baro-VNAV systems, LNAV/VNAV NA below -29°C (-20°F) or above 34°C (94°F).			
ASOS 120.0	SALT LAKE CENTER 127.7 354.125	GCO 121.72	UNICOM 123.0 (CTAF) 0



COOL

ELEV 7143 TDZE 7141

• 9195

VGSI and RNAV glidepath not coincident (VGSI Angle 3.00/TCH 45).

7 NM Holding Pattern

OLUNE

CEMAM

12000

JADUR

075° tr

EXILE

* RNAV only

10500 ← 234°

054° →

054°

9000

GP 3.00° TCH 55

* 0.8 NM to RW05

RW05

6 NM

4.8 NM

0.8

7300 X 100

7200

054°

CATEGORY	A	B	C	D
LPV DA		7391 - 3/4	250 (300 - 3/4)	
RNAV/VNAV DA		7643 - 1 3/4	502 (500 - 1 3/4)	
RNAV MDA		7440 - 1	299 (300 - 1)	

REIL Rwy 5

HIRL Rwy 5-23