

WAAS CH <b>77905</b> <b>W23A</b>	APP CRS <b>234°</b>	Rwy Idg TDZE Apt Elev	<b>7300</b> <b>7143</b> <b>7143</b>
--	------------------------	-----------------------------	---

RNAV (GPS) RWY 23

EVANSTON-UINTA COUNTY BURNS FLD (E V W)

RNP APCH - GPS.

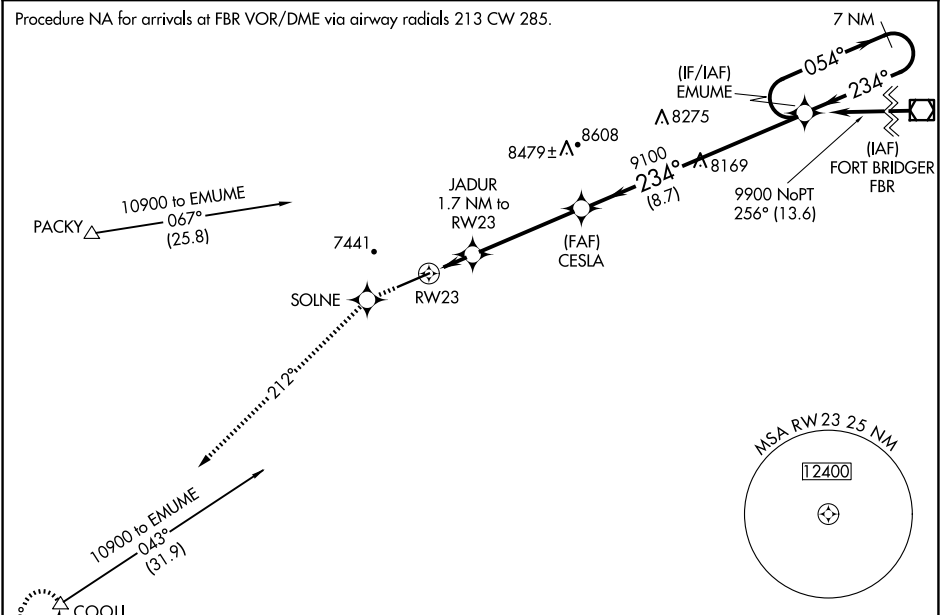
⚠

For inoperative MALSR, increase LPV all Cats visibility to 1, LNAV/VNAV Cat D to 1 and LNAV Cat D to 1¼. When local altimeter setting not received, procedure NA. For uncompensated Baro-VNAV systems, LNAV/VNAV NA below -29°C or above 34°C.

MALSR

MISSED APPROACH: Climb to 12000 direct SOLNE and via 212° track to COOLI and hold, continue climb-in-hold to 12000.

ASOS <b>120.0</b>	SALT LAKE CENTER <b>127.7 354.125</b>	GCO <b>121.72</b>	UNICOM <b>123.0 (CTAF)</b>
----------------------	--	----------------------	-------------------------------



ELEV 7143

TDZE 7143

12000	SOLNE $\star$	212° tr	COOLI $\triangle$	
*LNAV only				
	RW23	JADUR 1.7 NM to RW23	CESLA	EMUME 7 NM Holding Pattern
		*1.1 NM to RW23		
		7700*	9100	9900
		GP 3.00' TCH 47		
CATEGORY	A	B	C	D
LPV DA		7393-1/2	250 (300-1/2)	
LNAV/VNAV DA		7443-1/2	300 (300-1/2)	7443-3/4 300 (300-3/4)
LNAV MDA		7520-1/2	377 (400-1/2)	7520-1 377 (400-1)
CIRCLING	7680-1 537 (600-1)	7760-1 617 (700-1)	7800-1 3/4 657 (700-1 3/4)	8000-2 3/4 857 (900-2 3/4)

REIL Rwy 5

HIRL Rwy 5-23