

LOC/DME I-EVW 108.9 Chan 26	APP CRS 234°	Rwy Idg 7300 TDZE 7143 Apt Elev 7143
---	------------------------	---

ILS or LOC/DME RWY 23
EVANSTON-UINTA COUNTY BURNS FLD (EVW)

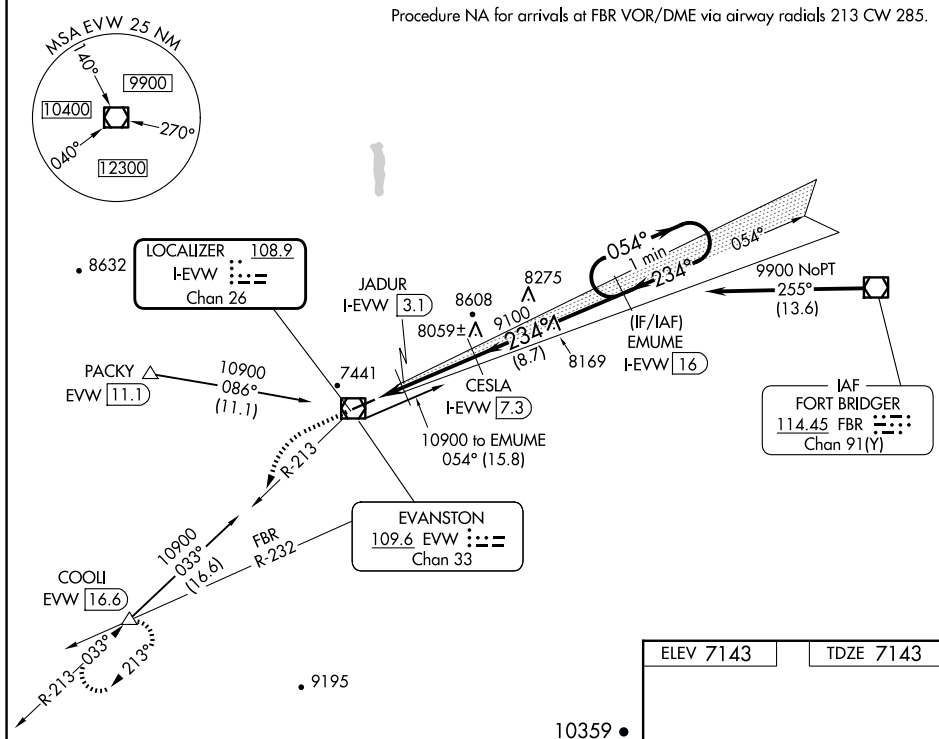
T For inoperative MALSR, increase S-LOC 23
A Cat D visibility to 1 mile. When local altimeter
setting not received, procedure NA.

MALSR


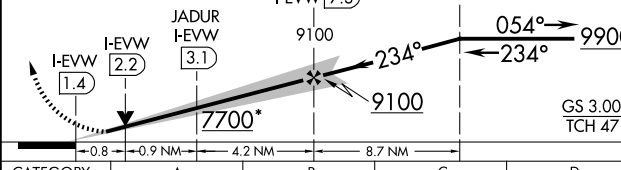
MISSED APPROACH: Climb to 7600 then climbing left turn to 12000 via EVW VOR/DME R-213 to COOL/EVW VOR/DME 16.6 DME and hold, continue climb-in-hold to 12000.

ASOS 120.0	SALT LAKE CENTER 127.7 354.125	GCO 121.72	UNICOM 123.0 (CTAF) ①
----------------------	--	----------------------	---------------------------------

Procedure NA for arrivals at FBR VOR/DME via airway radials 213 CW 285.



10359 •

<div>7600 ↑ 12000 EVW R-213 </div>		<div>COOL △</div>		<div>Use I-EVW DME when on the localizer course. *LOC only</div>	
<div></div>					
CATEGORY	A		B	C	D
S-ILS 23	7343-½ 200 (200-½)				
S-LOC 23	7440-½ 297 (300-½)				7440-¾ 297 (300-¾)
CIRCLING	7680-1 537 (600-1)	7760-1 617 (700-1)	7800-1¾ 657 (700-1¾)	8000-2¾ 857 (900-2¾)	

