

| | | |
|----------------------------------------|------------------------|--------------------------------------------------------------------|
| WAAS CH 86333 W09A | APP CRS 095° | Rwy Ldg TDZE 5200 4086 Apt Elev 4094 |
|----------------------------------------|------------------------|--------------------------------------------------------------------|

RNAV (GPS) RWY 9

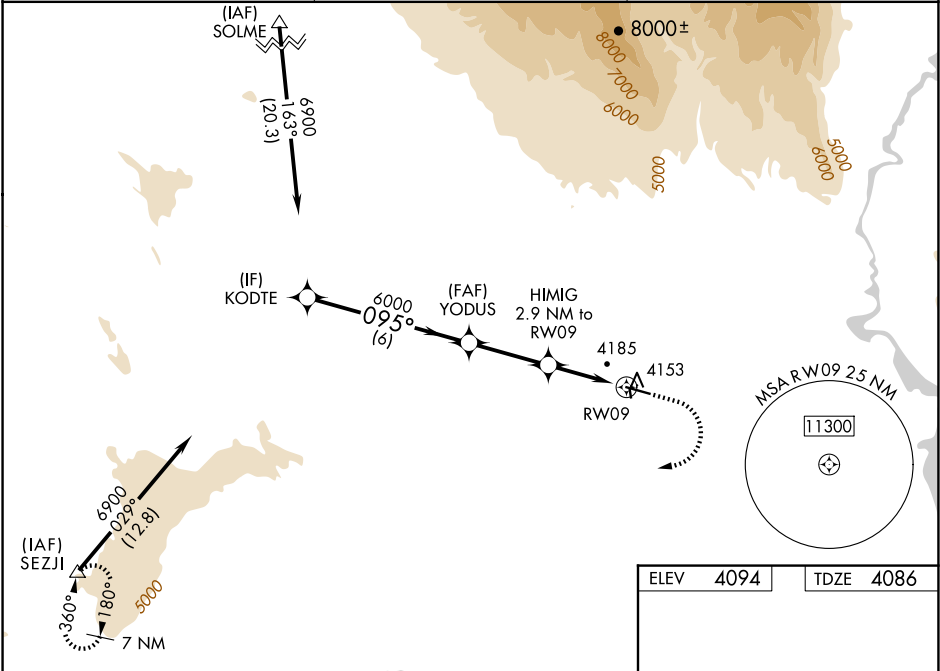
NORTH BIG HORN COUNTY (U68)

RNP APCH - GPS

Baro-VNAV NA when using Greybull altimeter setting. For uncompensated Baro-VNAV systems, LNAV/VNAV NA below -23°C or above 49°C. When Rwy 9 VGSi inop, Straight-in and Circling minimums NA at night. Helicopter visibility reduction below 1 SM NA. When local altimeter setting not received, use Greybull altimeter setting and increase all DA 87 feet and all LPV and LNAV/VNAV visibility ⅓ mile, increase all MDA 100 feet and LNAV Cats C/D visibility ⅓ mile and increase Circling Cat C visibility ¼ mile. Circling NA to Rwy 16 and 34.

MISSED APPROACH: Climb to 4600 then climbing right turn to 8500 direct SEZJI and hold.

| | | |
|--------------------------|-----------------------------------------|-------------------------------|
| AWOS-3 119.925 | SALT LAKE CENTER 133.25 285.6 | UNICOM 123.0 (CTAF) |
|--------------------------|-----------------------------------------|-------------------------------|



VGSI and RNAV glidepath not coincident (VGSI Angle 3.00/TCH 40).

4600

8500

SEZJI

KODTE

YODUS

HIMIG 2.9 NM to RW09

RW09

GP 3.00° TCH 55

6900

6000

5060

6 NM

2.9 NM

2.9 NM

* LNAV only.

91

59 X 65

34

5200 X 75

27

| CATEGORY | A | B | C | D |
|--------------|-----------------------|-----------------------|-------------------------|-------------------------|
| LPV DA | | 4336-1 | 250 (300-1) | |
| LNAV/VNAV DA | | 4344-1 | 258 (300-1) | |
| LNAV MDA | | 4440-1 | 354 (400-1) | |
| CIRCLING | 4520-1 426 (500-1) | 4680-1 586 (600-1) | 4940-2½ 846 (900-2½) | 5260-3 1166 (1200-3) |

REIL Rwy 9 and 27
MIRL Rwy 9-27