

WAAS CH <b>90532</b> <b>W29A</b>	APP CRS <b>286°</b>	Rwy Idg TDZE <b>120</b> Apt Elev <b>121</b>
--	------------------------	---

RNAV (GPS) RWY 29

NEW KENT COUNTY (W96)

RNP APCH - GPS.

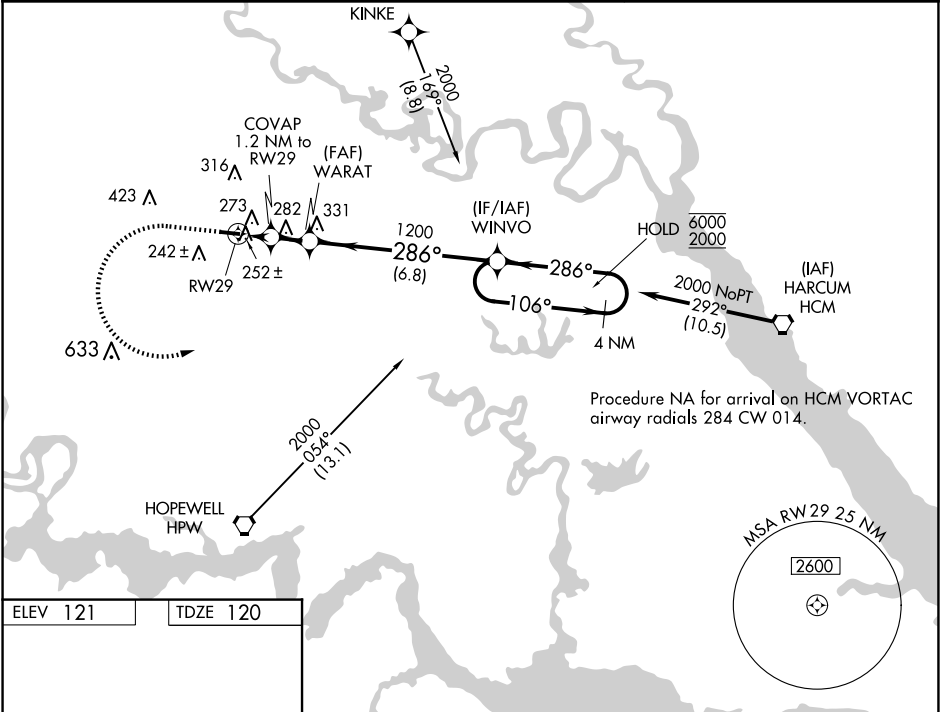
▼

▲

Rwy 29 helicopter visibility reduction below 1 SM NA.  
Procedure NA at night. When local altimeter setting not received,  
use RIC altimeter setting: increase all MDAs 40 feet and LNAV visibility  
Cat C ½ SM; increase LP and Circling visibility Cat C ¼ SM.

MISSED APPROACH: Climb to 900 then climbing left turn to 2000 direct WINVO and hold.

AWOS-3 <b>119.875</b>	POTOMAC APP CON <b>126.4 282.375</b>	UNICOM <b>122.8 (CTAF) 0</b>
--------------------------	---	---------------------------------



ELEV 121 TDZE 120

900 2000 WINVO

VGSI and descent angles not coincident (VGSI Angle 4.00/TCH 45).

4 NM Holding Pattern

COVAP 1.2 NM to RW29

WARAT

WINVO

106° 6000

286° 2000

1200

640

3.77° TCH 60

1.2 NM 1.4 NM 6.8 NM

CATEGORY	A	B	C	D
LP MDA	540-1	420 (500-1)	540-1½ 420 (500-1½)	NA
LNAV MDA	560-1	440 (500-1)	560-1¼ 440 (500-1¼)	NA
CIRCLING	620-1	499 (500-1)	760-1¾ 639 (700-1¾)	NA

MIRL Rwy 11-29

REIL Rws 11 and 29