

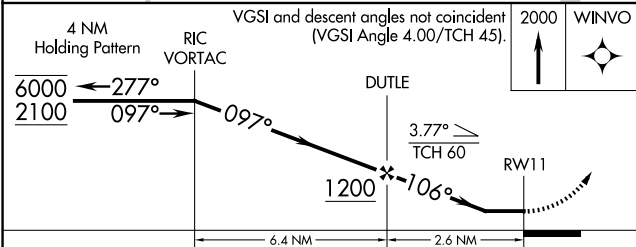
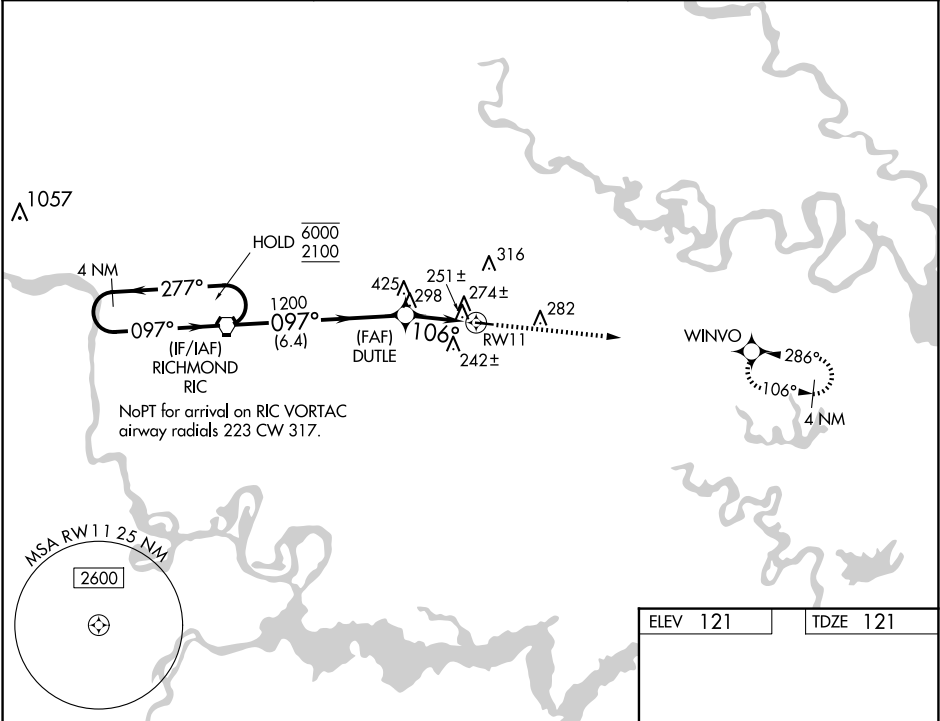
WAAS CH 45932 W11A	APP CRS 106°	Rwy Idg TDZE Apt Elev	3602 121 121
--	------------------------	-----------------------------	---

RNAV (GPS) RWY 11

NEW KENT COUNTY (W96)

RNP APCH - GPS.		MISSED APPROACH: Climb to 2000 direct WINVO and hold.
<div><div><div>▼</div><div>▲</div></div></div>	Procedure NA at night. Rwy 11 helicopter visibility reduction below 1 SM NA. When local altimeter setting not received, use RIC altimeter setting: increase all MDAs 40 feet and LNAV visibility Cat C ½ SM; increase LP and Circling visibility Cat C ¼ SM.	

AWOS-3 119.875	POTOMAC APP CON 126.4 282.375	UNICOM 122.8 (CTAF) 0
--------------------------	---	---------------------------------



ELEV 121

TDZE 121

MIRL Rwy 11-29 0

REIL Rwy 11 and 29 0