

APP CRS
345°

Rwy Idg
3834

TDZE
865

Apt Elev
873

RNAV (GPS) RWY 35

BOURLAND FLD (501°)

RNP APCH - GPS.

▼
NA

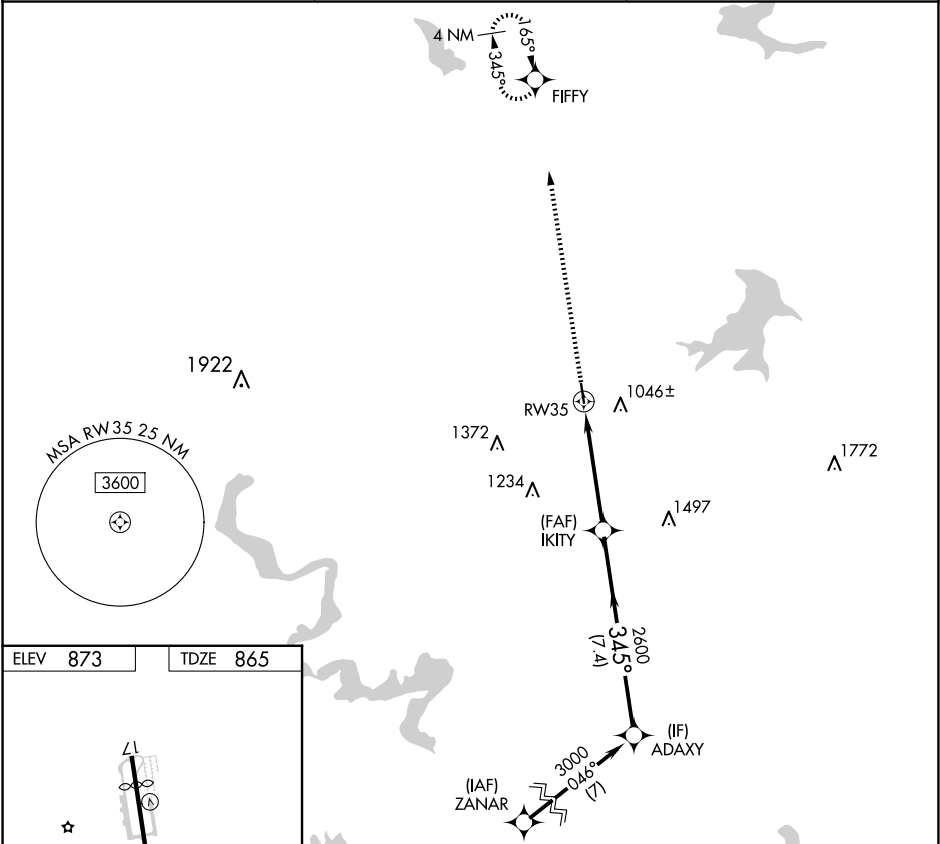
Procedure NA at night. Rwy 35 helicopter visibility reduction below 1 SM NA. Circling NA to Rwy 17.

MISSED APPROACH: Climb to 3000 direct FIFFY and hold.

CPT AWOS-3
119.525

LONE STAR APP CON
135.975 379.9

UNICOM
123.0 (CTAF) 0



ELEV 873

TDZE 865

3000

FIFFY

ADAXY

IKITY

RW35

345°

3000

2600

3.50°

TCH 30

4.7 NM

7.4 NM

CATEGORY	A	B	C	D
LNAV MDA	1560-1	695 (700-1)	1560-2 695 (700-2)	NA
CIRCLING	1580-1	707 (800-1)	1680-2¼ 807 (900-2¼)	NA

MIRL Rwy 17-35 0