

APP CRS
165°

Rwy Idg
TDZE
Apt Elev

3657
870
873

RNAV (GPS) RWY 17

BOURLAND FLD (501F)

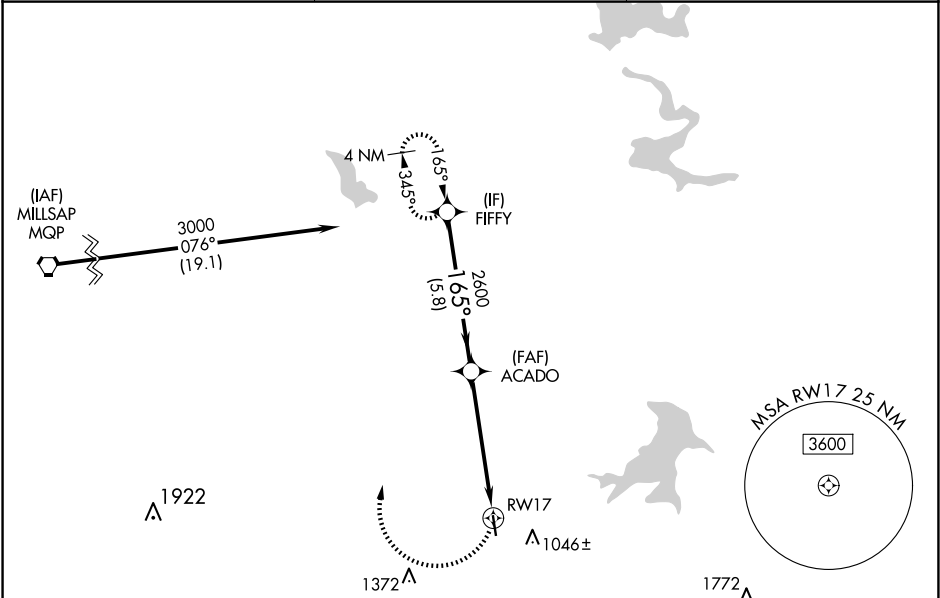
RNP APCH - GPS.

NA

Procedure NA at night. Rwy 17 helicopter visibility reduction below 1 SM NA.

MISSED APPROACH: Climbing right turn to 3000 direct FIFFY and hold.

CPT AWOS-3 119,525	LONE STAR APP CON 135,975 379.9	UNICOM 123.0 (CTAF) 0
-----------------------	------------------------------------	--------------------------



ELEV 873

TDZE 870

165°

35

VGSI and descent angles not coincident (VGSI Angle 3.00/TCH 23).

3000

FIFFY

FIFFY

ACADO

RWY17

3000

2600

165°

3.00° TCH 40

5.8 NM

5.3 NM

CATEGORY	A	B	C	D
LNAV MDA	1520-1	650 (700-1)	1520-17/8 650 (700-17/8)	NA

MIRL Rwy 17-35 0