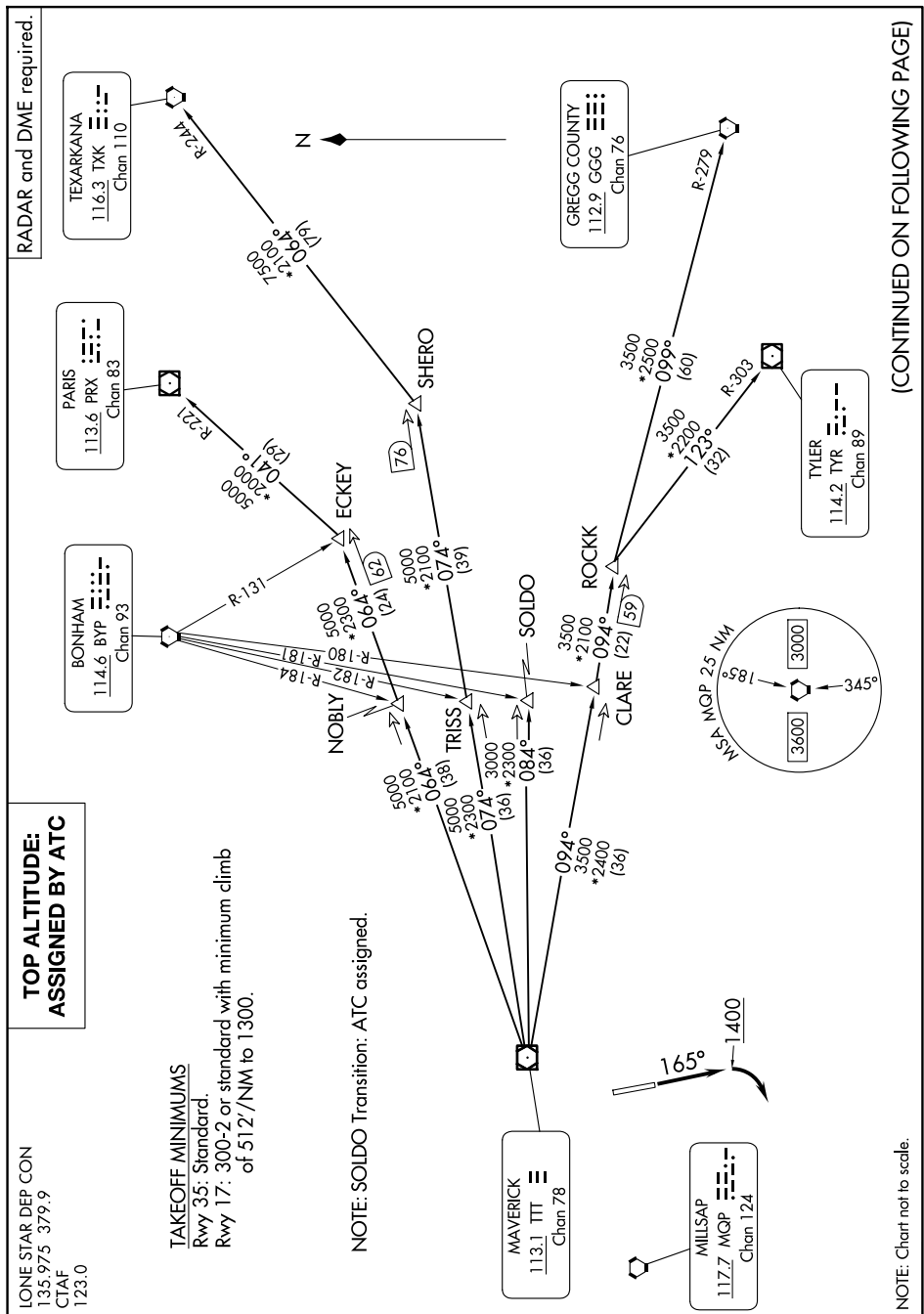


## GARLAND SIX DEPARTURE



**TOP ALTITUDE:  
ASSIGNED BY ATC**

LONE STAR DEP CON  
 135.975 379.9  
 CTAF  
 123.0

## TAKEOFF MINIMUMS

Rwy 35: Standard.

300-2 or standard with minimum climb of 512'/NM to 1300.

NOTE: SOLD Transition: ATC assigned.

NOTE: Chart not to scale.

(CONTINUED ON FOLLOWING PAGE)