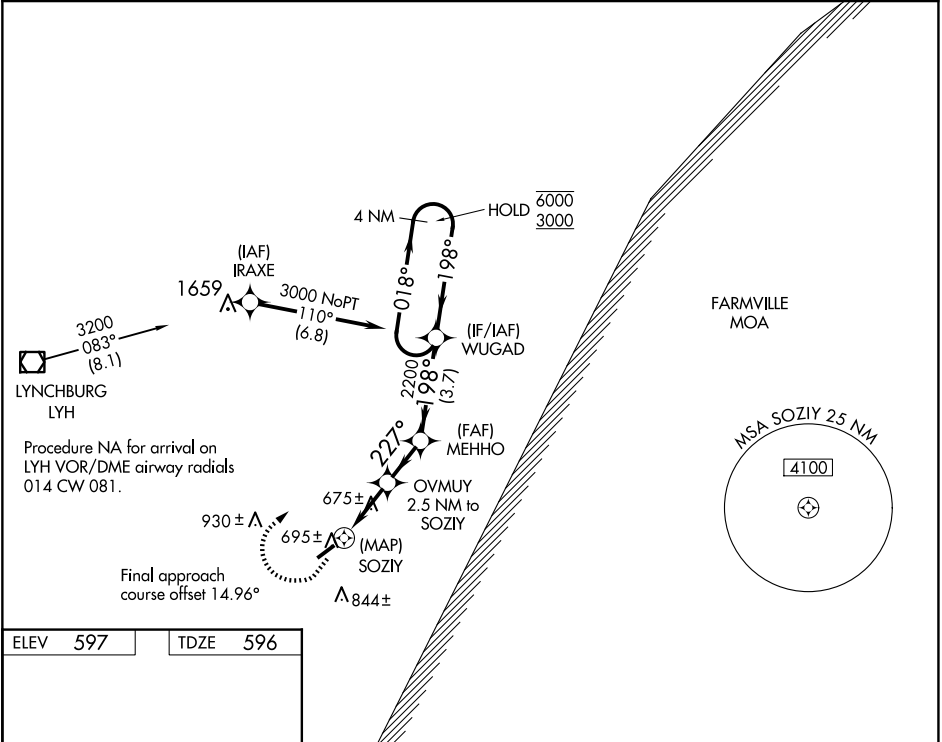


WAAS CH <b>97334</b> <b>W24A</b>	APP CRS <b>227°</b>	Rwy Idg <b>3798</b> TDZE <b>596</b> Apt Elev <b>597</b>
--	------------------------	---

**RNAV (GPS) RWY 24**  
BROOKNEAL/CAMPBELL COUNTY (ØV4)

RNP APCH.	MISSED APPROACH: Climb to 1000 then climbing right turn to 3000 direct WUGAD and hold.
When local altimeter setting not received, use Lynchburg Rgnl/Preston Glenn Fld altimeter setting and increase all MDA 100 feet.	

AWOS-3 <b>120.575</b>	ROANOKE APP CON <b>135.0 254.325</b>	UNICOM <b>122.7 (CTAF) Ø</b>
--------------------------	---	---------------------------------



ELEV <b>597</b>	TDZE <b>596</b>				
		1000	3000	WUGAD	
		SOZIY	OVMUY 2.5 NM to SOZIY	MEHHO 3.00° TCH 45	WUGAD 4 NM Holding Pattern
		1580	227°	2200	018° 198° 6000 3000
		0.5	2.5 NM	1.9 NM	3.7 NM
CATEGORY	A	B	C	D	
LP MDA	940-1	344 (400-1)	NA		
LNAV MDA	960-1	364 (400-1)	NA		
CIRCLING	1120-1 523 (600-1)	1180-1 583 (600-1)	NA		

NE-3, 10 JUL 2025 to 07 AUG 2025

NE-3, 10 JUL 2025 to 07 AUG 2025