

DENVER, COLORADO

AL-6851 (FAA)

23334

WAAS CH 93809 W35A	APP CRS 352°	Rwy Idg 8000 TDZE 5515 Apt Elev 5515
--	------------------------	---

RNAV (GPS) RWY 35

COLORADO AIR AND SPACE PORT (CFO)

RNP APCH.

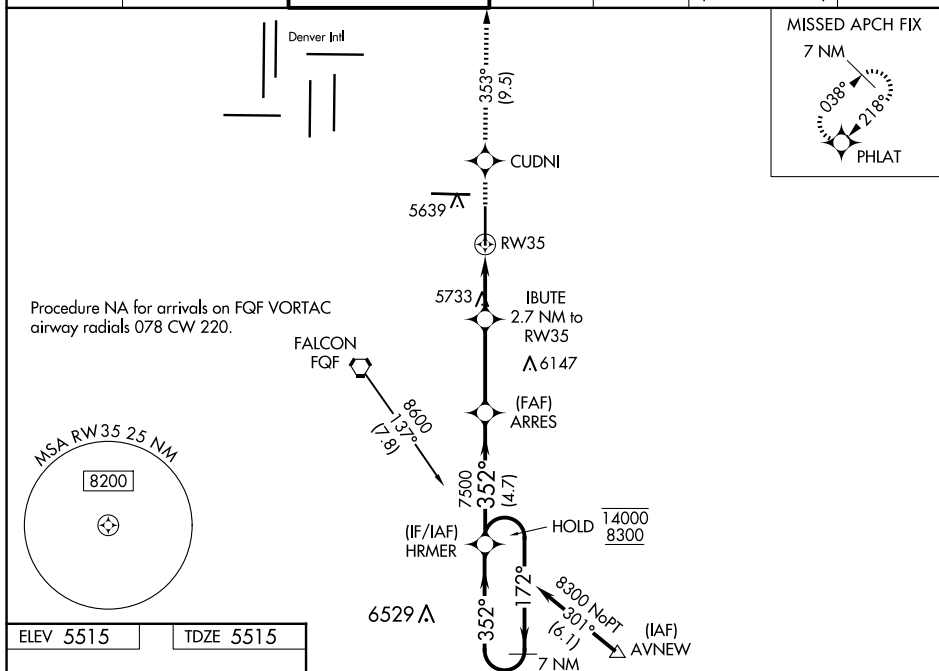
T For uncompensated Baro-VNAV systems, LNAV/VNAV NA below -25°C or above 46°C. For inop ALS, increase LNAV/VNAV all Cats visibility to $\frac{7}{8}$ SM.

MAISR

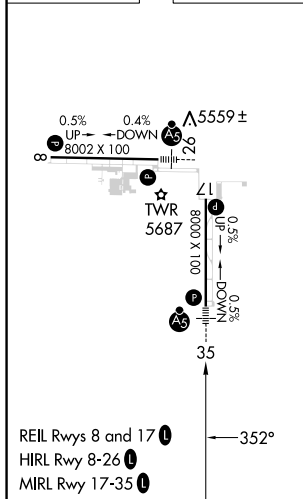


MISSED APPROACH: Climb to 8000 direct CUDNI and on track 353° to PHLAT and hold.

ATIS 119.025	DENVER APP CON 128.25 371.95	SPACE PORT TOWER ★ 120.2 (CTAF) 0	GND CON 124.7	CLNC DEL 124.7	CLNC DEL 121.75 (When twr closed)	UNICOM 122.95
------------------------	--	---	-------------------------	--------------------------	--	-------------------------



ELEV 5515		TDZE 5515
-----------	--	-----------

[illegible]

DENVER, COLORADO

Amdt 2A 30JAN20

39°47'N-104°32'W

COLORADO AIR AND SPACE PORT (CFO)

RNAV (GPS) RWY 35

SW-1, 10 JUL 2025 to 07 AUG 2025