

WAAS CH <b>93909</b> <b>W26A</b>	APP CRS <b>263°</b>	Rwy Idg TDZE Apt Elev	<b>8002</b> <b>5489</b> <b>5515</b>
--	------------------------	-----------------------------	---

RNAV (GPS) RWY 26

COLORADO AIR AND SPACE PORT (CFO)

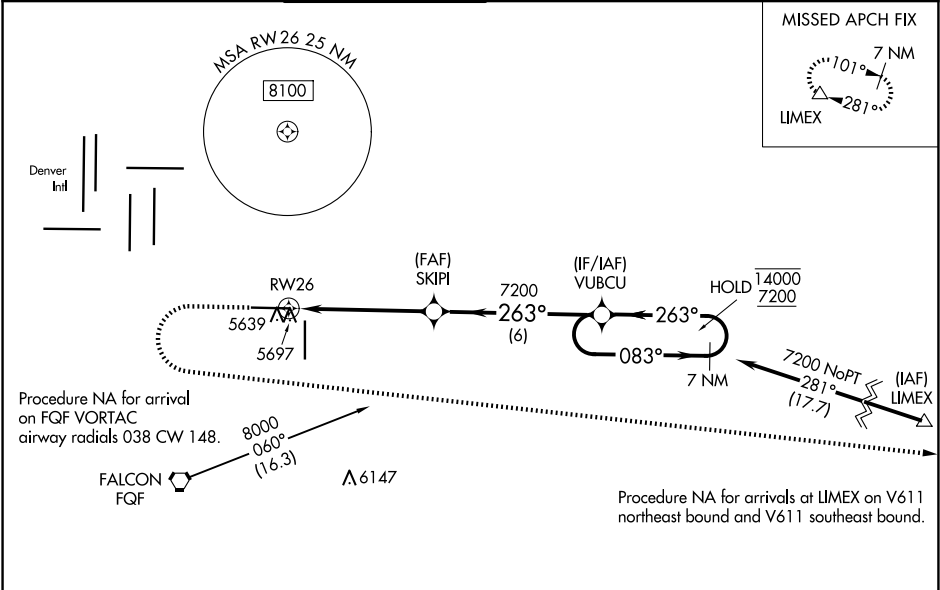
RNP APCH.

For uncompensated Baro-VNAV systems, LNAV/VNAV NA below -25°C or above 48°C. For inop ALS, increase LNAV/VNAV all Cats visibility to 1½ SM, and increase LNAV Cat C/D visibility to 1¾ SM.

MALSRL

MISSED APPROACH: (Do not exceed 200K until LIMEX) Climb to 6100 then climbing left turn to 7600 direct LIMEX and hold.

ATIS <b>119.025</b>	DENVER APP CON <b>128.25 371.95</b>	SPACE PORT TOWER ★ <b>120.2 (CTAF) 0</b>	GND CON <b>124.7</b>	CLNC DEL <b>124.7</b>	CLNC DEL <b>121.75</b> (When twr closed)	UNICOM <b>122.95</b>
------------------------	--	---	-------------------------	--------------------------	--	-------------------------



ELEV 5515

TDZE 5489

6100 7600 LIMEX

\*LNAV only

SKIPI VUBCU

7200 14000 7200

GP 3.00° TCH 50

CATEGORY A B C D

LPV DA 5689-½ 200 (200-½)

LNAV/VNAV DA 5858-¾ 369 (400-¾)

LNAV MDA 5960-½ 471 (500-½) 5960-1 471 (500-1)

CIRCLING 6000-1 485 (500-1) 6100-1½ 585 (600-1½) 6300-2½ 785 (800-2½)

REIL Rwy 8 and 17

HIRL Rwy 8-26

MIRL Rwy 17-35