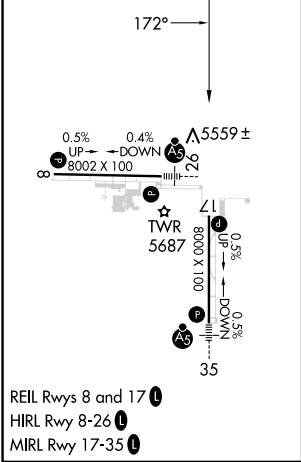
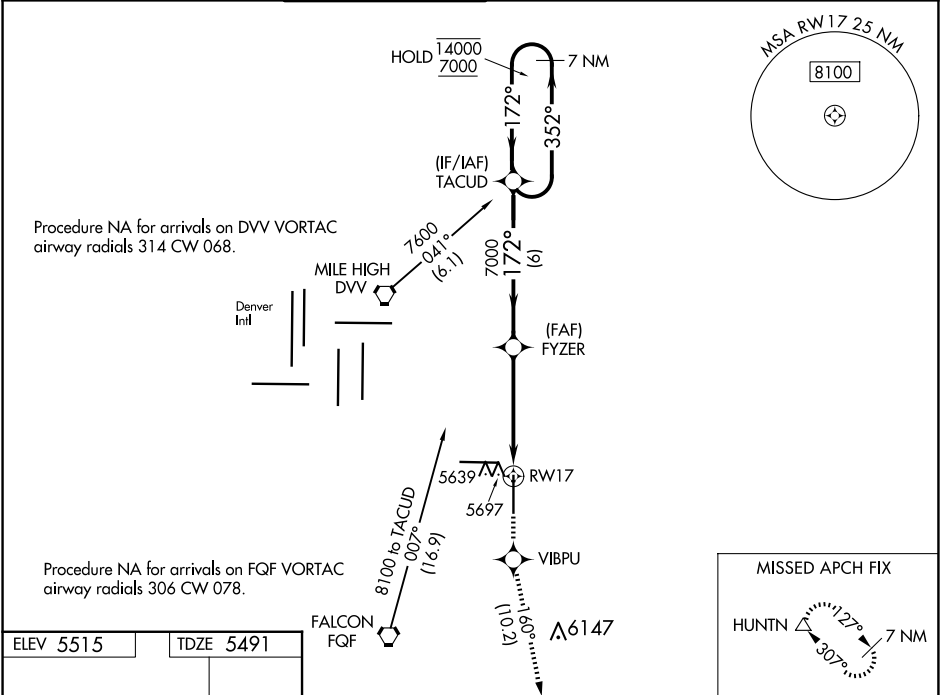


WAAS CH 82209 W17A	APP CRS 172°	Rwy Idg 8000 TDZE 5491 Apt Elev 5515
--	------------------------	---

RNAV (GPS) RWY 17
COLORADO AIR AND SPACE PORT (CFO)

RNP APCH-GPS. ▼ For uncompensated Baro-VNAV systems, LNAV/VNAV NA below -25°C or above 48°C. ▲ MISSED APPROACH: Climb to 8500 direct VIBPU and on track 160° to HUNTN and hold.			ATIS 119.025	DENVER APP CON 128.25 371.95	SPACE PORT TOWER ★ 120.2 (CTAF) 0	GND CON 124.7	CLNC DEL 124.7	CLNC DEL 121.75 (When twr closed)	UNICOM 122.95
---	--	--	------------------------	--	---	-------------------------	--------------------------	--	-------------------------



ELEV 5515		TDZE 5491
172°		
7 NM Holding Pattern		
TACUD		
FYZER		
VIBPU		
HUNTN		
8500		
160°		
*1.5 NM to RWY 17		
*LNAV only		
RWY 17		
GP 3.00°		
TCH 55		
CATEGORY	A	B
LPV DA	5691-3/4	200 (200-3/4)
LNAV/VNAV DA	5916-1 3/8	425 (500-1 3/8)
LNAV MDA	6000-1	509 (500-1)
CIRCLING	6000-1	485 (500-1)
	6100-1 1/2	6300-2 1/2
	585 (600-1 1/2)	785 (800-2 1/2)

SW-1, 10 JUL 2025 to 07 AUG 2025

SW-1, 10 JUL 2025 to 07 AUG 2025