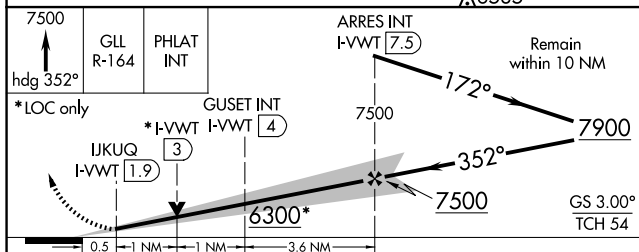
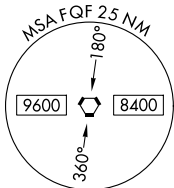


23334

ILS or LOC RWY 35  
COLORADO AIR AND SPACE PORT (CFO)

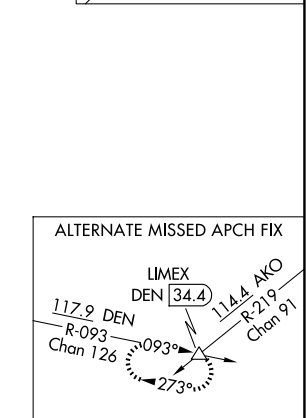
**MISSED APPROACH:** Climb to 7500 on heading 352° and on GLL VOR/DME R-164 to PHLAT INT/DVV 6.6 DME and hold.

FALCON  
116.3 FQF ::≡:-  
Chan 110



CATEGORY	A	B	C	D
S-ILS 35	5715-1/2 200 (200-1/2)			
S-LOC 35	6300-1/2 785 (800-1/2)	6300-3/4 785 (800-3/4)	6300-13/4 785 (800-13/4)	
GUEST FIX MINIMUMS (DUAL VOR RECEIVERS OR DME REQUIRED)				
S-LOC 35	6040-1/2 525 (600-1/2)		6040-1 525 (600-1)	

COLORADO AIR AND SPACE PORT (CFO)  
ILS or LOC RWY 35



ELEV 5515

TDZE 5515

0.5% UP → 0.4% DOWN

8002 X 100

5559 ±

TWR 5687

352°

35°

REIL Rwy 8 and 17

HIRL Rwy 8-26

MIRL Rwy 17-35

FAF to MAP 5.6 NM

	Knots	60	90	120	150	180
Min:Sec	5:36	3:44	2:48	2:14	1:52	

SW-1, 10 JUL 2025 to 07 AUG 2025