

LOC/DME I-FTG

109.3

Chan 30

APP CRS

263°

Rwy Idg TDZE

8002 5489

Apt Elev

5515

ILS or LOC RWY 26

COLORADO AIR AND SPACE PORT (CFO)

DME required.

▼

For inop ALS, increase S-LOC 26 Cat C/D visibility to 1 1/8 SM. Autopilot coupled approach NA below 6250 MSL.

MALSR

MISSED APPROACH: Climb to 6100 then climbing left turn to 7200 on heading 080° and on FQF VORTAC R-045 to SKIPI/I-FTG 7 DME and hold.

ATIS

119.025

DENVER APP CON

128.25 371.95

SPACE PORT TOWER ★

120.2 (CTAF) 1

GND CON

124.7

CLNC DEL

124.7

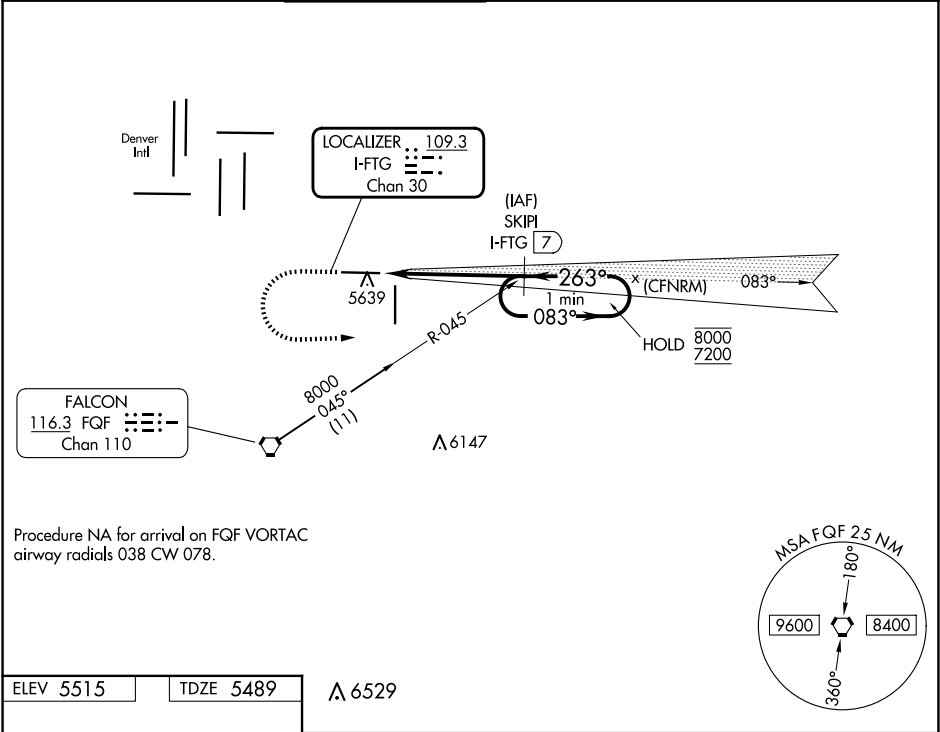
CLNC DEL

121.75

(When twr closed)

UNICOM

122.95



Procedure NA for arrival on FQF VORTAC
airway radials 038 CW 078.

ELEV 5515

TDZE 5489

△ 6529

6100

7200

hdg 080°

FQF

R-045

SKIPI

I-FTG 7

SKIPI

I-FTG 7

One Minute Holding Pattern

*LOC only

I-FTG 1.7

*I-FTG 2.9

7200

083°

8000

7200

263°

7200

GS 3.00°

TCH 50

1.1 NM

4.1 NM

| CATEGORY | A | B | C | D |
|----------|------------------------|---|----------------------------|----------------------------|
| S-ILS 26 | 5689-1/2 200 (200-1/2) | | | |
| S-LOC 26 | 5900-1/2 411 (400-1/2) | | 5900-3/4 411 (400-3/4) | |
| CIRCLING | 6000-1 485 (500-1) | | 6100-1 1/2 585 (600-1 1/2) | 6300-2 1/2 785 (800-2 1/2) |

REIL Rws 8 and 17 1

HIRL Rwy 8-26 1

MIRL Rwy 17-35 1