

LOC/DME I-FZR	APP CRS	Rwy Idg	8000
110.9	172°	TDZE	5491
Chan 46		Apt Elev	5515

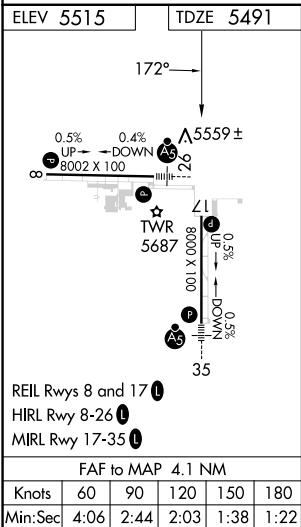
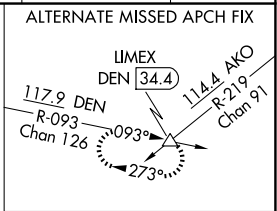
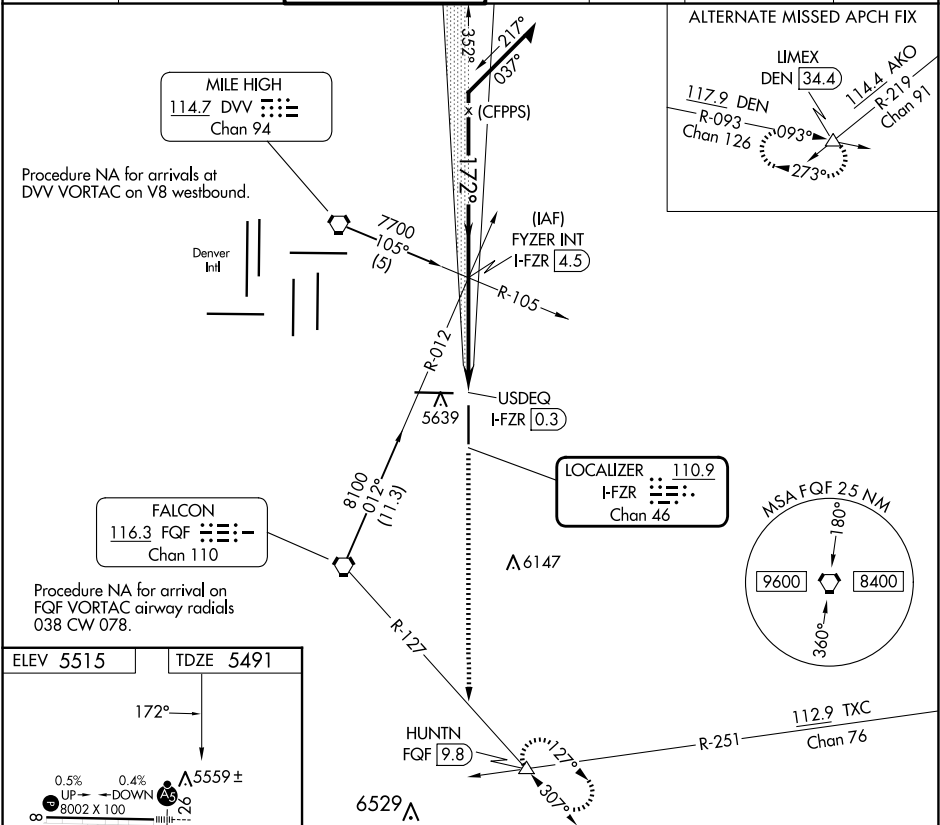
ILS or LOC RWY 17
COLORADO AIR AND SPACE PORT (CFO)

M

A

MISSED APPROACH: Climb to 8500 on heading 172° and FQF VORTAC R-127 to HUNTN INT/FQF 9.8 DME and hold.

ATIS 119.025	DENVER APP CON 128.25 371.95	SPACE PORT TOWER ★ 120.2 (CTAF) 0	GND CON 124.7	CLNC DEL 124.7	CLNC DEL 121.75 (When twr closed)	UNICOM 122.95
-----------------	---------------------------------	---	------------------	-------------------	---	------------------



Remain within 10 NM	FYZER INT I-FZR 4.5	8500 hdg 172°	FQF R-127	HUNTN
7000	7000	I-FZR DME ANTENNA	USDEQ I-FZR 0.3	
GS 3.00°	7000			
TCH 55				
		4.1 NM	0.5 NM	
CATEGORY	A	B	C	D
S-ILS 17		5691-3/4	200 (200-3/4)	
S-LOC 17		5820-1	329 (400-1)	
CIRCLING	6000-1	485 (500-1)	6100-1 1/2 585 (600-1 1/2)	6300-2 1/2 785 (800-2 1/2)

SW-1, 10 JUL 2025 to 07 AUG 2025

SW-1, 10 JUL 2025 to 07 AUG 2025