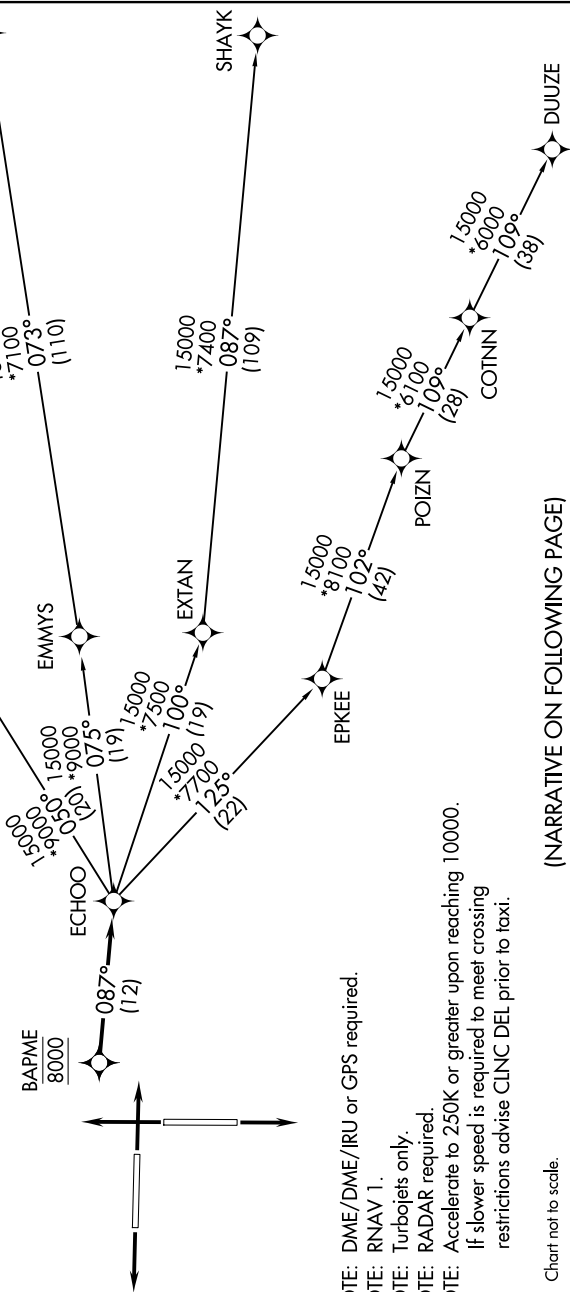


SW-1, 10 JUL 2025 to 07 AUG 2025

TOP ALTITUDE:
FL230

TAKEOFF MINIMUMS
Rwys 8, 17, 26, 35: Standard.



NOTE: DME/DME/IRU or GPS required.
NOTE: RNAV 1.
NOTE: Turbojets only.
NOTE: RADAR required.
NOTE: Accelerate to 250K or greater upon reaching 10000.
If slower speed is required to meet crossing
restrictions advise CLNC DEL prior to taxi.

NOTE: Chart not to scale.

(NARRATIVE ON FOLLOWING PAGE)

SW-1, 10 JUL 2025 to 07 AUG 2025