

APP CRS	Rwy Idg	8600
258°	TDZE	270
	Apt Elev	270

RNAV (GPS) RWY 26

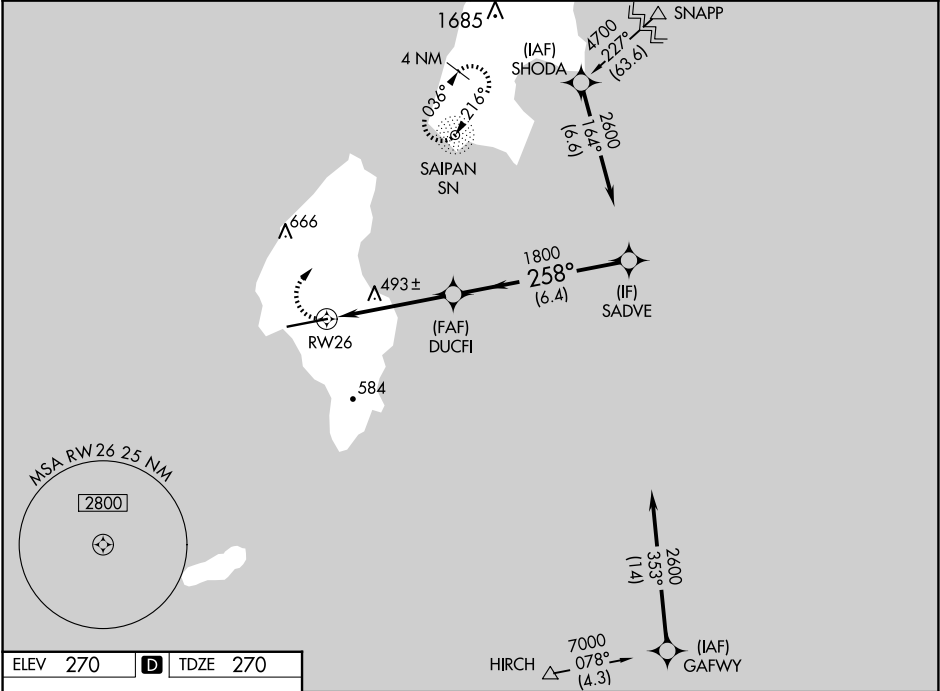
FRANCISCO MANGLONA BORJA/TINIAN INTL (TNI)(PGWT)

RNP APCH.

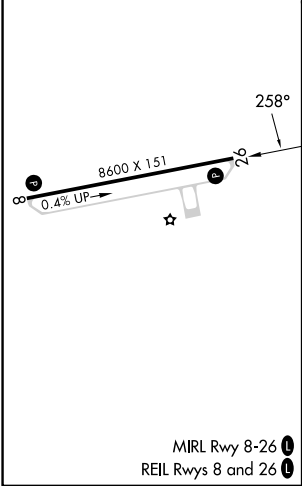
Obtain local altimeter setting on CTAF; when not received, use Saipan altimeter setting. VDP NA when using Saipan altimeter setting.

MISSED APPROACH: Climbing right turn to 2800 direct SN NDB and hold, continue climb-in-hold to 2800.

GUAM CERAP	SAIPAN RADIO
118.4 290.5	123.6 (CTAF) 0



ELEV 270	D	TDZE 270
----------	---	----------



2800	SN		
258°			
8600 X 151	0.4% UP		
1.4	3.2 NM	6.4 NM	
1.4 NM to RW26			
3.04° TCH 45			
CATEGORY	A	B	C
LNAV MDA	760-1 490 (500-1)	760-1 490 (500-1 1/4)	760-1 490 (500-1 1/2)
CIRCLING	760-1 490 (500-1)	860-1 590 (600-1)	1000-2 730 (800-2)
SAIPAN ALTIMETER SETTING MINIMUMS			
LNAV MDA	780-1 510 (600-1)	780-1 510 (600-1 1/2)	
CIRCLING	800-1 530 (600-1)	900-1 630 (700-1)	1040-2 770 (800-2 1/4)