

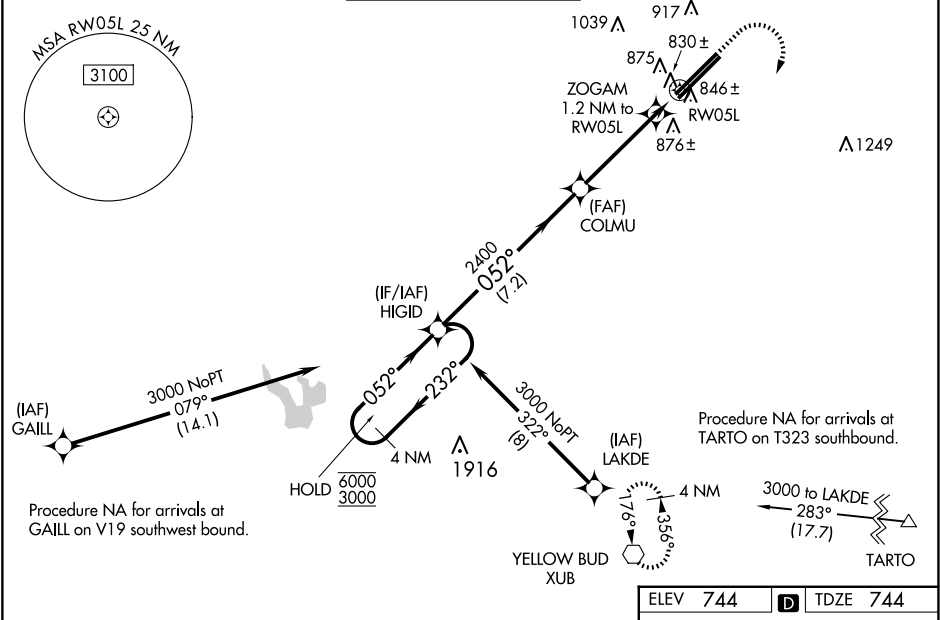


WAAS CH 78022 W05B	APP CRS 052°	Rwy Ldg 11004 TDZE 744 Apt Elev 744
--	------------------------	--

RNAV (GPS) RWY 5L

RICKENBACKER INTL (LCK)

RNP APCH - GPS.					<div>MALSR</div> <div></div>	MISSED APPROACH: Climb to 1500 then climbing right turn to 3000 direct XUB VOR and hold.
<div></div> <div>Circling NA northwest of Rwy 5L-23R. For uncompensated Baro-VNAV systems, LNAV/VNAV NA below -16°C or above 54°C. Baro-VNAV NA when using John Glenn Columbus Intl altimeter setting. When local altimeter setting not received, use John Glenn Columbus Intl altimeter setting: increase LPV DA to 979 feet; increase LNAV/VNAV DA to 1042 feet; increase all MDAs 40 feet and Circling visibility Cat D ¼ SM.</div>						
ATIS 132.75	COLUMBUS APP CON 134.0 279.6		RICK TOWER 120.05 348.4		GND CON 125.275 275.8	CLNC DEL 125.275 275.8



VGSI and RNAV glidepath not coincident (VGSI Angle 3.00/TCH 70).		1500	3000	XUB
4 NM Holding Pattern				
<div>HIGID</div> <div>6000 ← 232°</div> <div>3000 → 052°</div> <div>GP 3.00° TCH 55</div>		<div>COLU</div> <div>2400</div> <div>ZOGAM 1.2 NM to RW05L</div> <div>RW05L</div> <div>2400</div> <div>1200</div>		
7.2 NM		3.8 NM	1.2 NM	
CATEGORY	A	B	C	D
LPV DA	944-1½		200 (200-½)	
LNAV/VNAV DA	1007-1½		263 (300-½)	
LNAV MDA	1100-½	356 (400-½)	1100-⅝	356 (400-⅝)
CIRCLING	1240-1	496 (500-1)	1280-1½ 536 (600-1½)	1400-2 656 (700-2)

