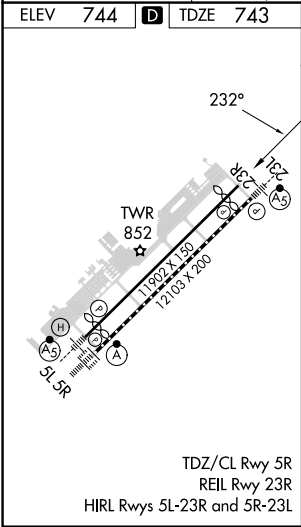
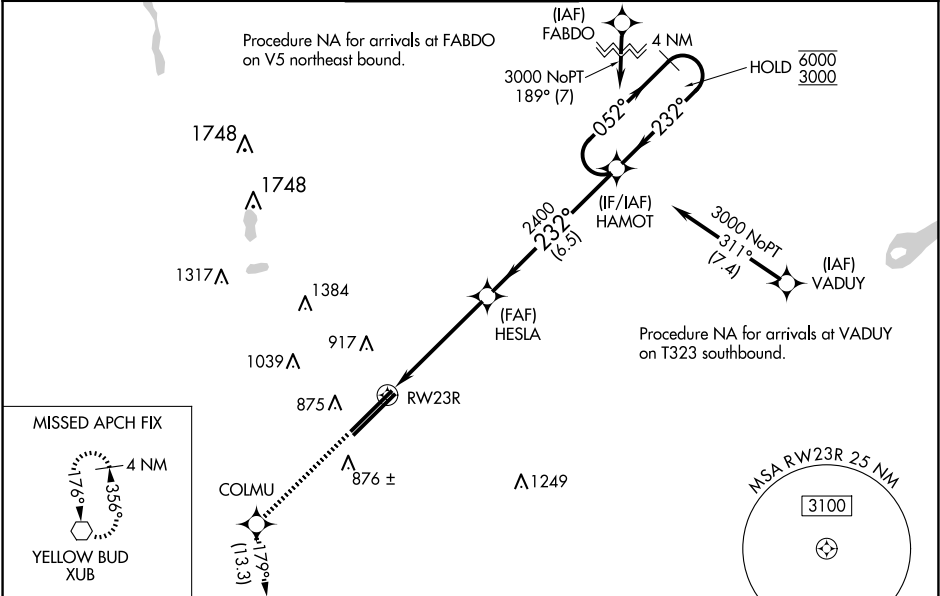


WAAS CH 78421 W23B	APP CRS 232°	Rwy Ldg 10913 TDZE 743 Apt Elev 744
--	------------------------	--

RNAV (GPS) RWY 23R
RICKENBACKER INTL (LCK)

RNP APCH - GPS.	MISSED APPROACH: Climb to 3000 direct COLMU and on track 179° to XUB VOR and hold.
-----------------	--

ATIS 132.75	COLUMBUS APP CON 134.0 279.6	RICK TOWER 120.05 348.4	GND CON 125.275 275.8	CLNC DEL 125.275 275.8
-----------------------	--	-----------------------------------	---------------------------------	----------------------------------



3000	COLMU	XUB	VGSI and RNAV glidepath not coincident (VGSI Angle 3.00/TCH 79).	
↑	tr 179°	⬡	4 NM	Holding Pattern
1.3 NM to RW23R		HESLA 2400	052°	6000
RW23R		2400	232°	3000
1.3		3.8 NM	6.5 NM	GP 3.00° TCH 55
CATEGORY	A	B	C	D
LPV DA	943-3/4		200 (200-3/4)	
LNAV/VNAV DA	1006-7/8		263 (300-7/8)	
LNAV MDA	1220-1	477 (500-1)	1220-1 3/8	477 (500-1 3/8)
CIRCLING	1240-1	496 (500-1)	1280-1 1/2 536 (600-1 1/2)	1400-2 656 (700-2)

EC-2, 10 JUL 2025 to 07 AUG 2025

EC-2, 10 JUL 2025 to 07 AUG 2025