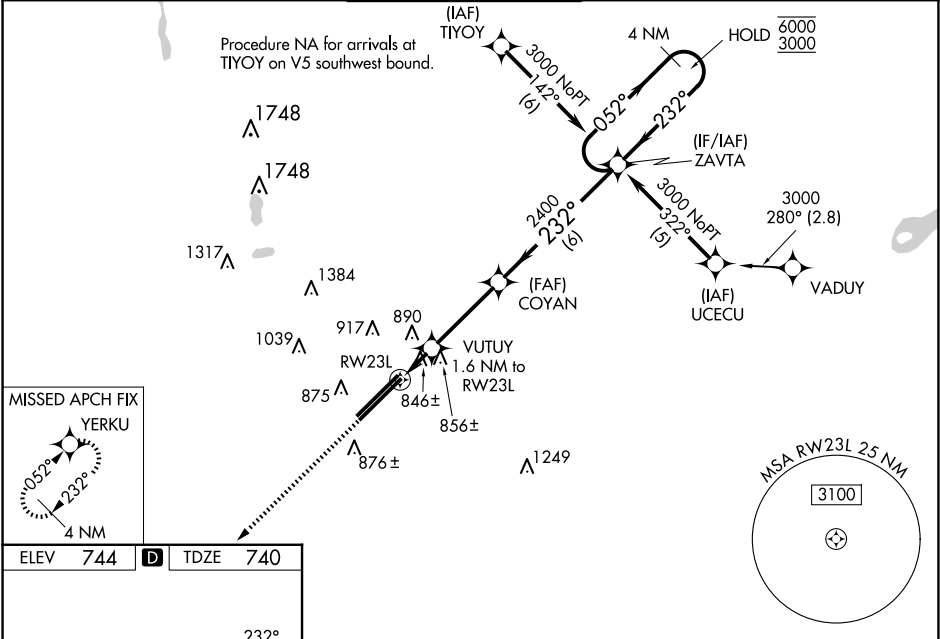


WAAS CH 62811 W23A	APP CRS 232°	Rwy Ldg 12103 TDZE 740 Apt Elev 744
--	------------------------	--

RNAV (GPS) RWY 23L
RICKENBACKER INTL (LCK)

RNP APCH - GPS.		MALSR	MISSED APPROACH: Climb to 3000 direct YERKU and hold.
<p>⚠ For uncompensated Baro-VNAV systems, LNAV/VNAV NA below -16°C or above 54°C. Circling NA northwest of Rwy 5L-23R. Baro-VNAV NA when using John Glenn Columbus Intl altimeter setting. When local altimeter setting not received, use John Glenn Columbus Intl altimeter setting: increase LPV DA to 975 feet; increase LNAV/VNAV DA to 1157 feet and all visibilities to RVR 4000; increase all MDAs 40 feet and LNAV visibility Cats C/D to RVR 5000 and Circling Cat D to 2¼ SM.</p> <p>* RVR 1800 authorized with use of FD or AP or HUD to DA, (NA when using John Glenn Columbus Intl altimeter setting).</p>			

ATIS 132.75	COLUMBUS APP CON 134.0 279.6	RICK TOWER 120.05 348.4	GND CON 125.275 275.8	CLNC DEL 125.275 275.8
-----------------------	--	-----------------------------------	---------------------------------	----------------------------------



		3000 YERKU VGSI and RNAV glidepath not coincident (VGSI Angle 3.00/TCH 78).		4 NM Holding Pattern
		ZAVTA 052° 6000, 232° 3000		GP 3.00° TCH 55
CATEGORY	A	B	C	D
LPV DA *	940/24		200 (200-½)	
LNAV/VNAV DA	1122/35		382 (400-¾)	
LNAV MDA	1180/24 440 (500-½)		1180/40	440 (500-¾)
CIRCLING	1240-1 496 (500-1)		1280-1½ 536 (600-1½)	1400-2 656 (700-2)

EC-2, 10 JUL 2025 to 07 AUG 2025

EC-2, 10 JUL 2025 to 07 AUG 2025