

LOC I-LCK 110.1	APP CRS 232°	Rwy Idg	23L	23R
		TDZE	740	743
		Apt Elev	744	744

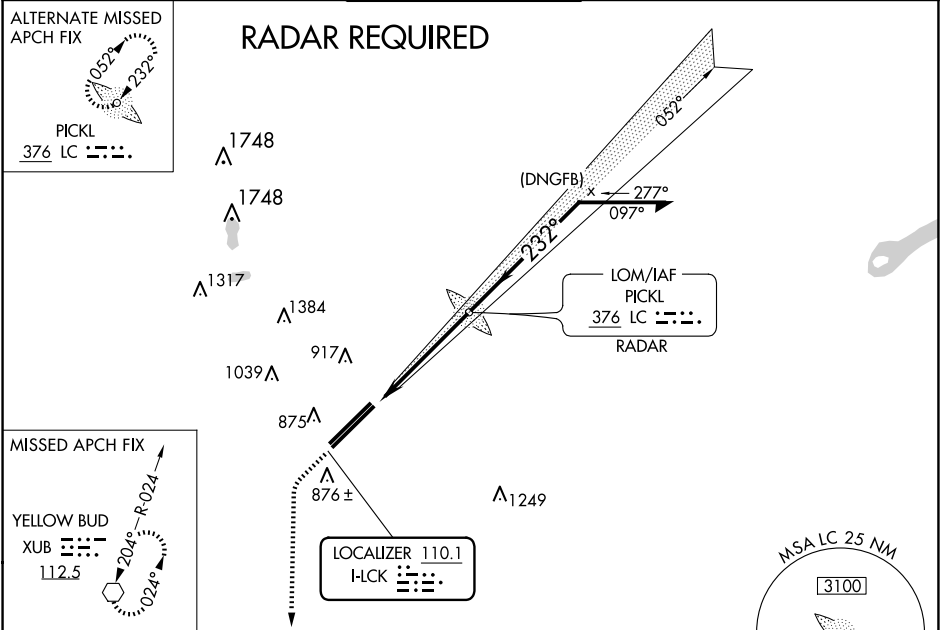
ILS or LOC RWY 23L
RICKENBACKER INTL (LCK)

⚠ Circling NA northwest of Rwy 5L-23R. When local altimeter setting not received, use John Glenn Columbus Intl altimeter setting: increase DA to 975 feet; increase all MDAs 40 feet and S-LOC 23L visibility Cats C/D to RVR 5500 and Circling visibility Cat D to 2¼ SM. Autopilot coupled approach N/A below 1000 MSL.

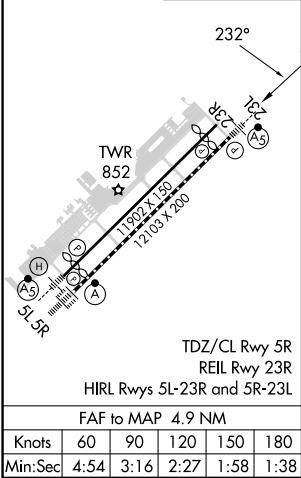
MALSR

MISSED APPROACH: Climb to 3000, then left turn direct XUB VOR and hold.

ATIS 132.75	COLUMBUS APP CON 134.0 279.6	RICK TOWER 120.05 348.4	GND CON 125.275 275.8	CLNC DEL 125.275 275.8
-----------------------	--	-----------------------------------	---------------------------------	----------------------------------



ELEV	744	TDZE	23L	740
		TDZE	23R	743



3000	XUB	LC LOM RADAR	2372	052°	2900	232°	2400	GS 3.00° TCH 62
VGSI and ILS glidepath not coincident (VGSI Angle 3.00/TCH 78).								
4.9 NM								
CATEGORY	A	B	C	D				
S-ILS 23L	940/24 200 (200-½)							
S-LOC 23L	1220/24 480 (500-½)		1220/50 480 (500-1)					
SIDESTEP RWY 23R	1220-1 477 (500-1)		1220-1½ 477 (500-1½)		1220-2 477 (500-2)			
CIRCLING	1240-1 496 (500-1)		1280-1½ 536 (600-1½)		1400-2 656 (700-2)			

EC-2, 10 JUL 2025 to 07 AUG 2025

EC-2, 10 JUL 2025 to 07 AUG 2025