

WAAS  
CH **66044**  
**W28A**

APP CRS  
**289°**

Rwy Idg  
TDZE  
Apt Elev

**5703**  
**4202**  
**4207**

**RNAV (GPS) RWY 28**

TORRINGTON MUNI (TOR)

RNP APCH - GPS.

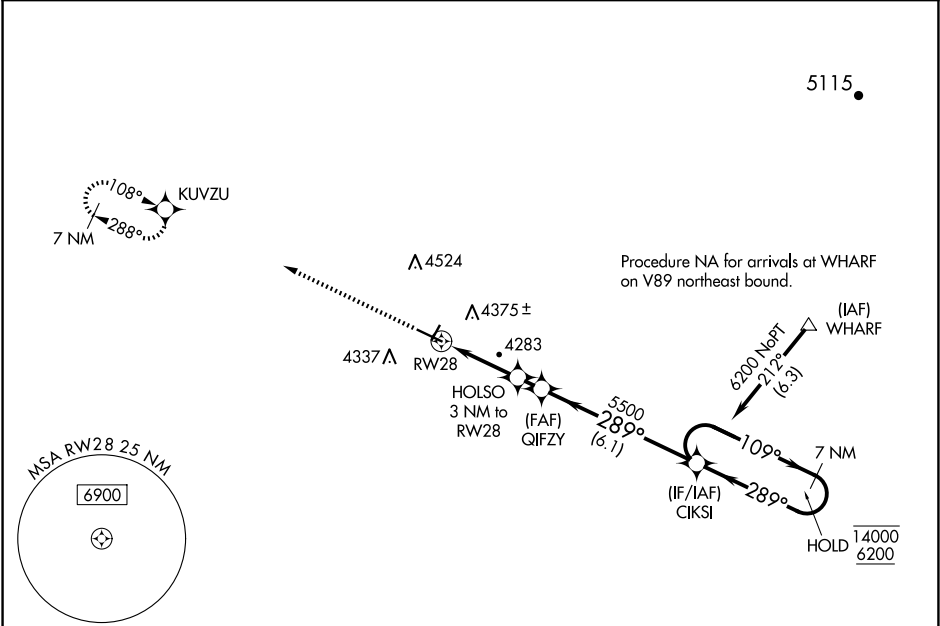
▼

▲

For uncompensated Baro-VNAV systems, LNAV/VNAV  
NA below -26°C or above 54°C.

MISSED APPROACH: Climb to 6500 direct KUVZU and hold.

ASOS <b>118.375</b>	DENVER CENTER <b>127.95 338.2</b>	UNICOM <b>122.8 (CTAF) 0</b>
------------------------	--------------------------------------	---------------------------------



ELEV **4207**

TDZE **4202**

6500

KUVZU

HOLSO 3 NM to RWY 28

QIFZY

CIKSI

7 NM Holding Pattern

1.2 NM

1.8 NM

0.9 NM

6.1 NM

14000

6200

GP 3.00°

TCH 40

CATEGORY	A	B	C	D
LPV DA	4452-3/4 250 (300-3/4)			
LNAV/VNAV DA	4560-1 358 (400-1)			
LNAV MDA	4620-1	418 (500-1)	4620-1 1/8	418 (500-1 1/8)
CIRCLING	4740-1	533 (600-1)	4880-2 673 (700-2)	4960-2 1/2 753 (800-2 1/2)

REIL Rwy 28 0

MIRL Rwy 10-28 0