

TORRINGTON, WYOMING

AL-6845 (FAA)

22363

NDB TOR
293

APP CR
101°

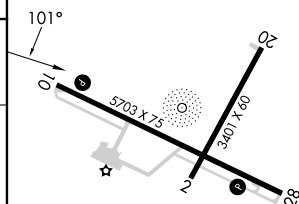
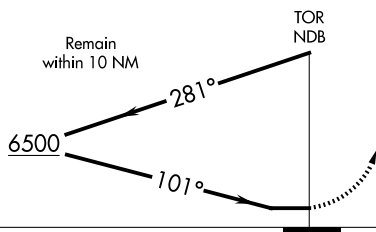
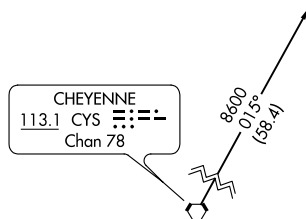
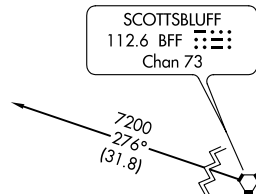
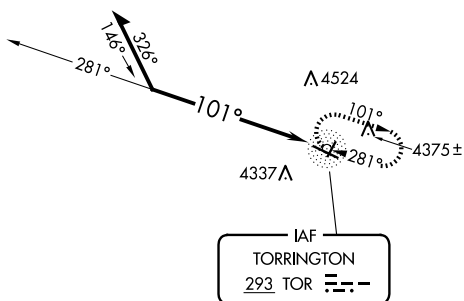
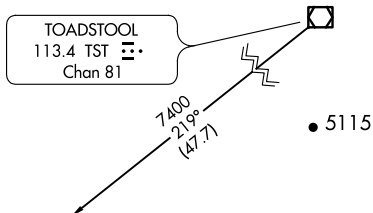
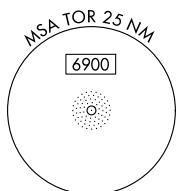
Rwy Idg	5703
TDZE	4207
Apt Elev	4207

NDB RWY 10
TORRINGTON MUNI (TOR)



MISSED APPROACH: Climb to 6500 in TOR NDB holding pattern.

ASOS
118,375

DENVER CENTER
127.95 338.2UNICOM
122.8 (CTAF) **L**

CATEGORY	A	B	C	D
S-10	5040-1 833 (900-1)	5040-1¼ 833 (900-1¼)	5040-2½	833 (900-2½)
CIRCLING	5040-1¼	833 (900-1¼)	5040-2½ 833 (900-2½)	5040-2¾ 833 (900-2¾)

REIL Rwy 28 **L**
MIRL Rwy 10-28 **L**

TORRINGTON, WYOMING

Amdt 3 29DEC22

TORRINGTON MUNI (TOR)
NDB RWY 10

42°04'N-104°09'W

NW-1, 10 JUL 2025 to 07 AUG 2025

NW-1, 10 JUL 2025 to 07 AUG 2025