

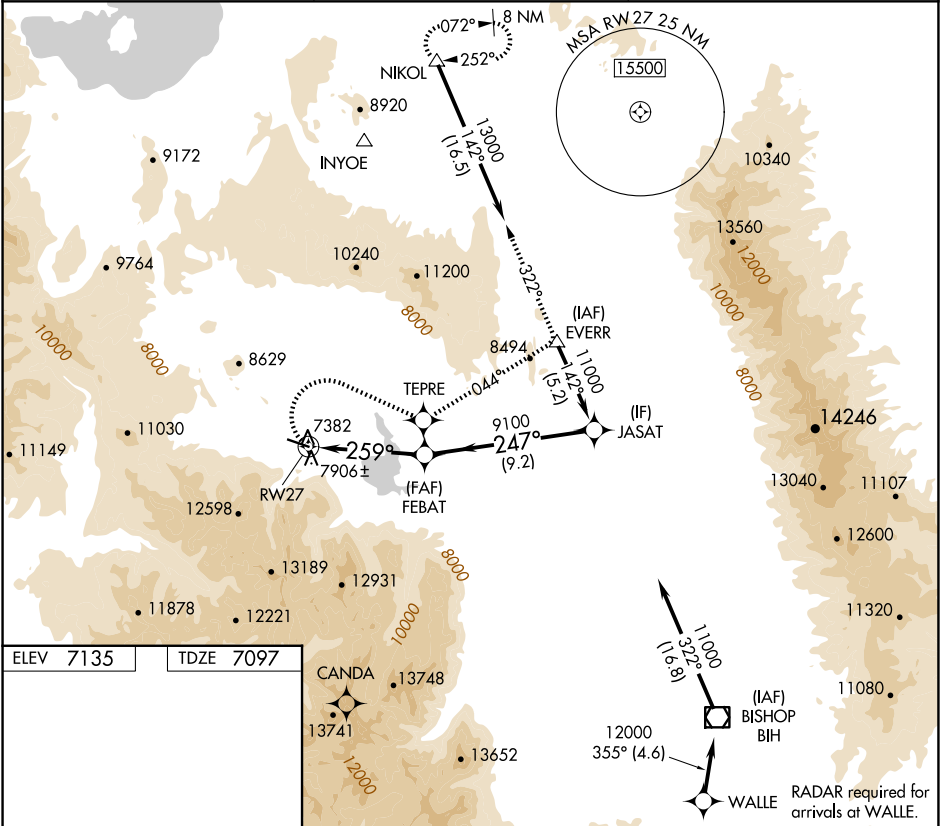
APP CRS	Rwy Idg	7000
259°	TDZE	7097
	Apt Elev	7135

RNAV (GPS) RWY 27

MAMMOTH YOSEMITE (MMH)

<div><div></div><div></div></div> <div>Circling NA at night. Circling NA south of Rwy 9-27. DME/DME RNP-0.3 NA. When local altimeter setting not received, procedure NA.</div>	MISSED APPROACH: Climbing right turn to 13000 direct TEPRE and via track 044° to EVERR and via track 322° to NIKOL and hold.
--	--

AWOS-3 118.05	OAKLAND CENTER 125.75 284.65	UNICOM 122.8 (CTAF) 0
------------------	---------------------------------	--------------------------



13000	TEPRE	tr 044°	EVERR	tr 322°	NIKOL	FEBAT	JASAT
RW27		4 NM to RW27		≤ 2.99° TCH 45		11000	
4 NM		2.3 NM		9.2 NM		Procedure Turn NA	
CATEGORY	A		B		C		D
LNAV MDA	8380-1¼ 1283 (1300-1¼)		8380-1½ 1283 (1300-1½)		8380-3 1283 (1300-3)		NA
CIRCLING	8380-1¼ 1245 (1300-1¼)		8380-1½ 1245 (1300-1½)		8540-3 1405 (1500-3)		NA

REIL Rwy 27 0
MIRL Rwy 9-27 0