

WAAS  
CH **69330**  
**W28A**

APP CRS  
**284°**

Rwy Idg  
TDZE **778**  
Apt Elev **780**

**3854**  
**778**  
**780**

**RNAV (GPS) RWY 28**

LE ROY (5G0)

RNP APCH.

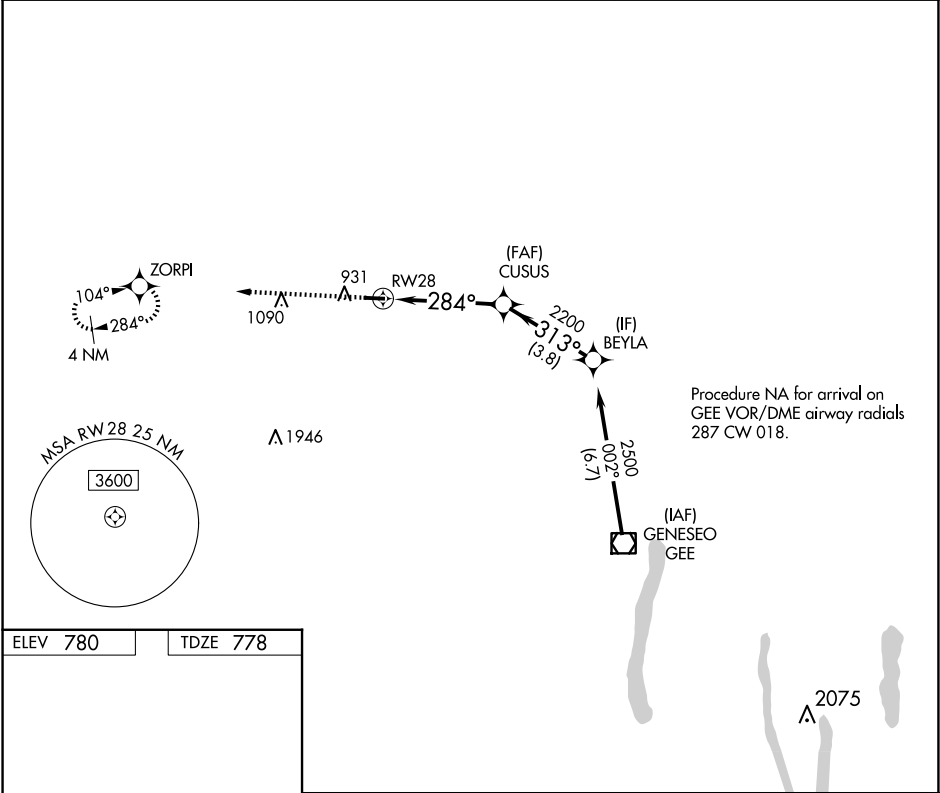
Procedure NA at night. Rwy 28 helicopter visibility reduction below 1 SM NA.

NA Use Frederick Douglass/Greater Rochester Intl altimeter setting.

MISSED APPROACH:

Climb to 3000 direct ZORPI and hold.

ROC ASOS <b>124.825</b>	ROCHESTER APP CON <b>123.7 322.3</b>	UNICOM <b>122.8 (CTAF) 0</b>
----------------------------	---	---------------------------------



ELEV **780**

TDZE **778**

3000

ZORPI

Visual Segment - Obstacles.

RWY 28

CUSUS

BEYLA

3854 X 60

284°

28

2200

284°

313°

2500

4.3 NM

3.8 NM

CATEGORY	A	B	C	D
LP MDA	1 240-1	462 (500-1)	NA	
LNAV MDA	1 240-1	462 (500-1)	NA	

MIRL Rwy 10-28 0

REIL Rwy 10 and 28 0