

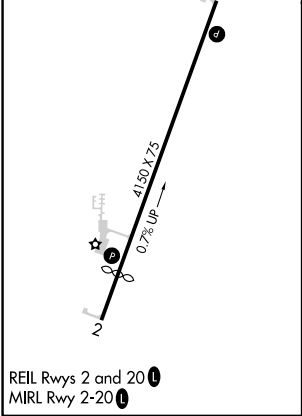
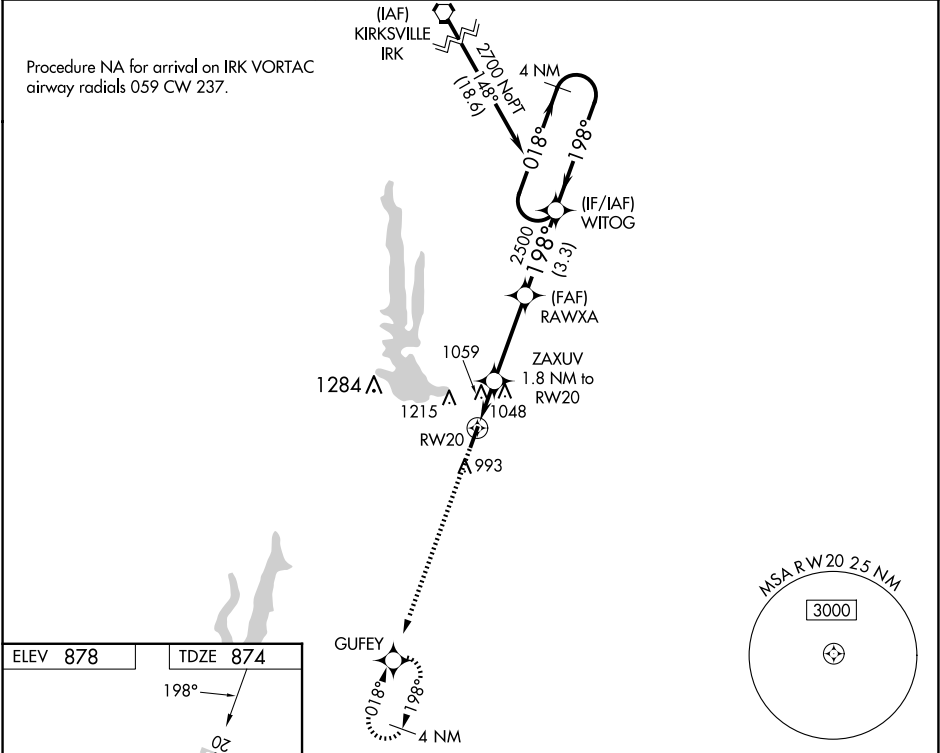
WAAS CH 42933 W20A	APP CRS 198°	Rwy Ldg 4150 TDZE 874 Apt Elev 878
--	------------------------	---

RNAV (GPS) RWY 20

MACON-FOWER MEML (K89)

<div><div><div>NA</div></div><div>DME/DME RNP-0.3 NA. Use Moberly altimeter setting; when not received, use Columbia altimeter setting and increase all MDA 100 feet. Helicopter visibility reduction below 1 SM NA. Night landing: Rwy 20 NA.</div></div>	MISSED APPROACH: Climb to 3000 direct GUFY and hold.
--	--

MBY AWOS-3PT 120.025	KANSAS CITY CENTER 125.25 235.975	UNICOM 122.8 (CTAF)
--------------------------------	---	-------------------------------



3000	GUFY	WITOG	4 NM Holding Pattern
ZAXUV 1.8 NM to RWY 20	RAWXA	2500	198°
1460	3.00° TCH 41	2700	018°
1.8 NM	3.3 NM	3.3 NM	
CATEGORY	A	B	C
LP MDA	1340-1	466 (500-1)	NA
LNAV MDA	1360-1	486 (500-1)	NA
CIRCLING	1400-1 522 (600-1)	1560-1 682 (700-1)	NA