

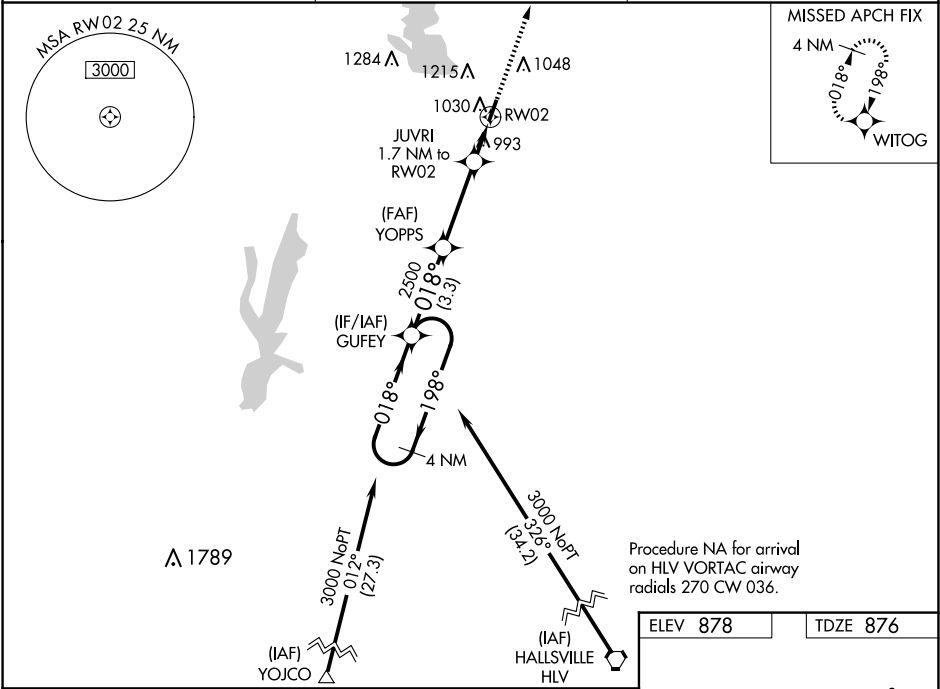
WAAS CH 65933 W02A	APP CRS 018°	Rwy Ldg TDZE Apt Elev	3554 876 878
---------------------------------	------------------------	-----------------------------	---

RNAV (GPS) RWY 2
MACON-FOWER MEML (K89)

NA DME/DME RNP-0.3 NA. Use Moberly altimeter setting; when not received use Columbia altimeter setting and increase all DA 91 feet and all MDA 100 feet and increase LPV all Cats and LNAV/VNAV all Cats visibility ¼ mile. Helicopter visibility reduction below ¾ SM NA. Night Landing: Rwy 20 NA. Baro-VNAV NA.

MISSED APPROACH: Climb to 2700 direct WITOG and hold.

MBY AWOS-3PT 120.025	KANSAS CITY CENTER 125.25 235.975	UNICOM 122.8 (CTAF) 0
--------------------------------	---	---------------------------------



4 NM Holding Pattern

VGSI and RNAV glidepath not coincident (VGSI Angle 3.00/TCH 31).

2700 WITOG

*LNAV only

GP 3.00° TCH 40

3000 ← 198° 018° → 018°

2500

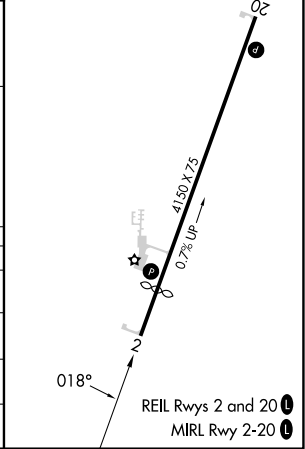
YOPPS

JUVRI 1.7 NM to RW02

*1460

3.3 NM 3.3 NM 1.7 NM

CATEGORY	A	B	C	D
LPV DA	1165-1	289 (300-1)		NA
LNAV/VNAV DA	1309-1½	433 (500-1½)		NA
LNAV MDA	1320-1	444 (500-1)		NA
CIRCLING	1400-1 522 (600-1)	1560-1 682 (700-1)		NA



NC-3, 10 JUL 2025 to 07 AUG 2025

NC-3, 10 JUL 2025 to 07 AUG 2025