

APP CRS	Rwy Idg	3301
060°	TDZE	1215
	Apt Elev	1215

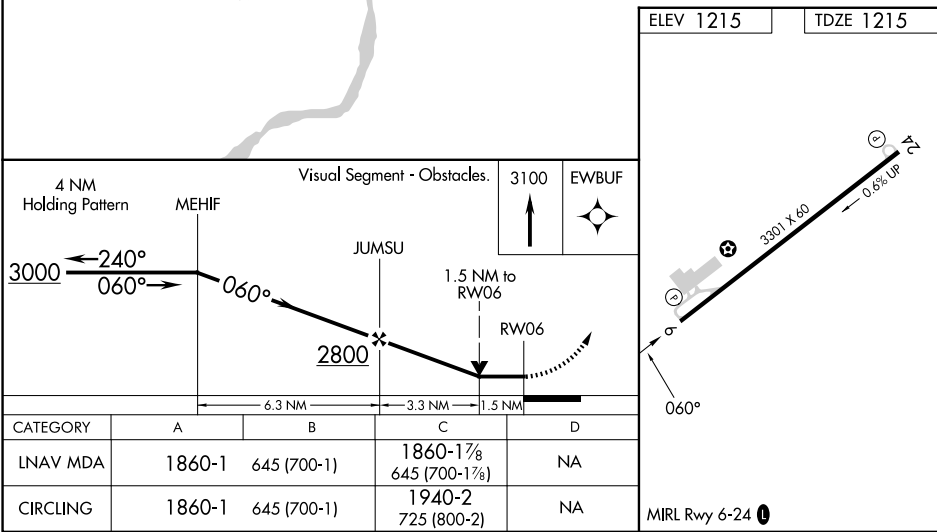
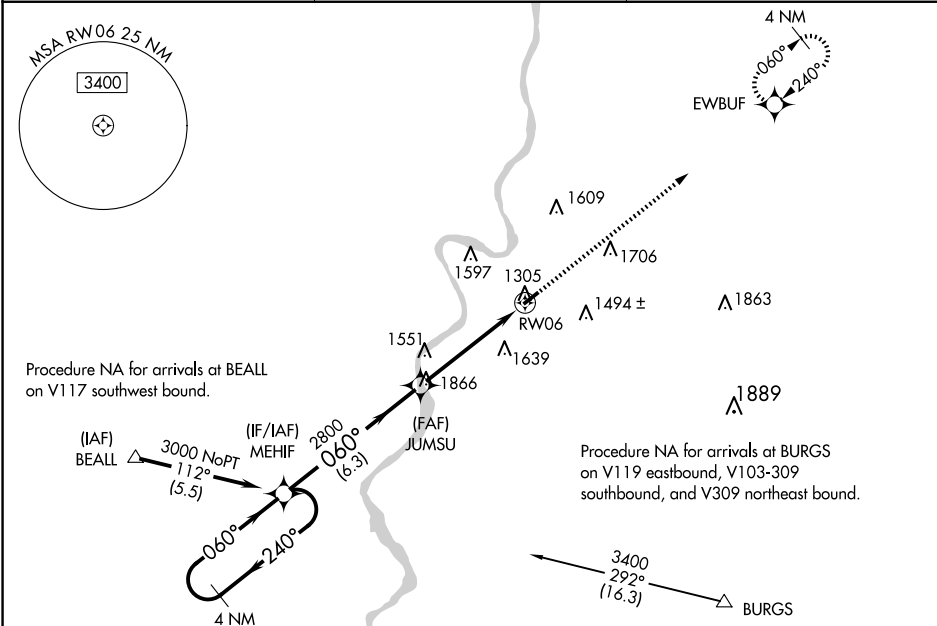
RNAV (GPS) RWY 6  
MARSHALL COUNTY (MPG)

RNP APCH.

▼ Rwy 6 helicopter visibility reduction below ¾ SM NA. VDP NA when using Wheeling altimeter setting. When local altimeter setting not received, use Wheeling altimeter setting: increase all MDA 60 feet and visibility LNAV Cat C ½ SM and Circling Cat C ¼ SM.

▲ NA MISSED APPROACH: Climb to 3100 direct EWBUFF and hold.

AWOS-3 119.05	CLEVELAND CENTER 126.95 239.30	UNICOM 122.7 (CTAF) ①
------------------	-----------------------------------	--------------------------



NE-4, 10 JUL 2025 to 07 AUG 2025

NE-4, 10 JUL 2025 to 07 AUG 2025